

LEA Name : Central Bucks SD
Address : 20 Welden Dr
Doylestown , PA 18901

County : Bucks
AUN Number : 122092102
LEA Type : SD


Annual Financial Report Accuracy Certification Statement

For Fiscal Year Ending
6/30/2021

Pennsylvania Department of Education
&
Office of Comptroller Operations

PDE-2056: Intermediate Unit
PDE-2057: School District, AVTS/CTC, Charter School,
and Special Program Jointure

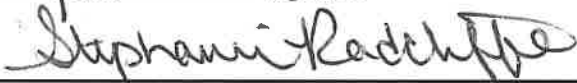
CERTIFICATION: By signing this page I agree that the electronic data submitted is a complete and accurate statement of the financial operations and status of the local education agency for the fiscal year. It has been prepared in accordance with generally accepted accounting principles and established Commonwealth of PA reporting guidelines.



Chief School Administrator Signature

11.30.21

Date



Board Secretary Signature

11/30/2021

Date

Barbara Markowitz

Contact Person

(267)893-2077 Ext :

Contact Person Telephone Number

bmarkowitz@cbsd.org

Contact Person E-mail Address

(267)893-5800

Contact Person Fax Number

Audit Certification
Annual Financial Report:
For Fiscal Year Ending **6/30/2021**
(Pursuant to PA School Code Section 218(b))

LEA Name : Central Bucks SD
AUN Number : 122092102
County : Bucks

Audit Certification Due: 12/31/2021

This certification is applicable to the Annual Financial Report data submitted through the Consolidated Financial Reporting System (CFRS).

CERTIFICATION: By signing this page I agree that the financial statements of the school have been properly audited as noted above pursuant to Article XXIV, and in the auditor's professional opinion, the Annual Financial Report (PDE-2057) submitted through CFRS is materially consistent with the audited financial statements.

Chief School Administrator

Board Secretary

Signature

Date

Signature

Date

Barbara Markowitz

Contact Person

bmarkowitz@cbsd.org

Contact Person E-mail Address

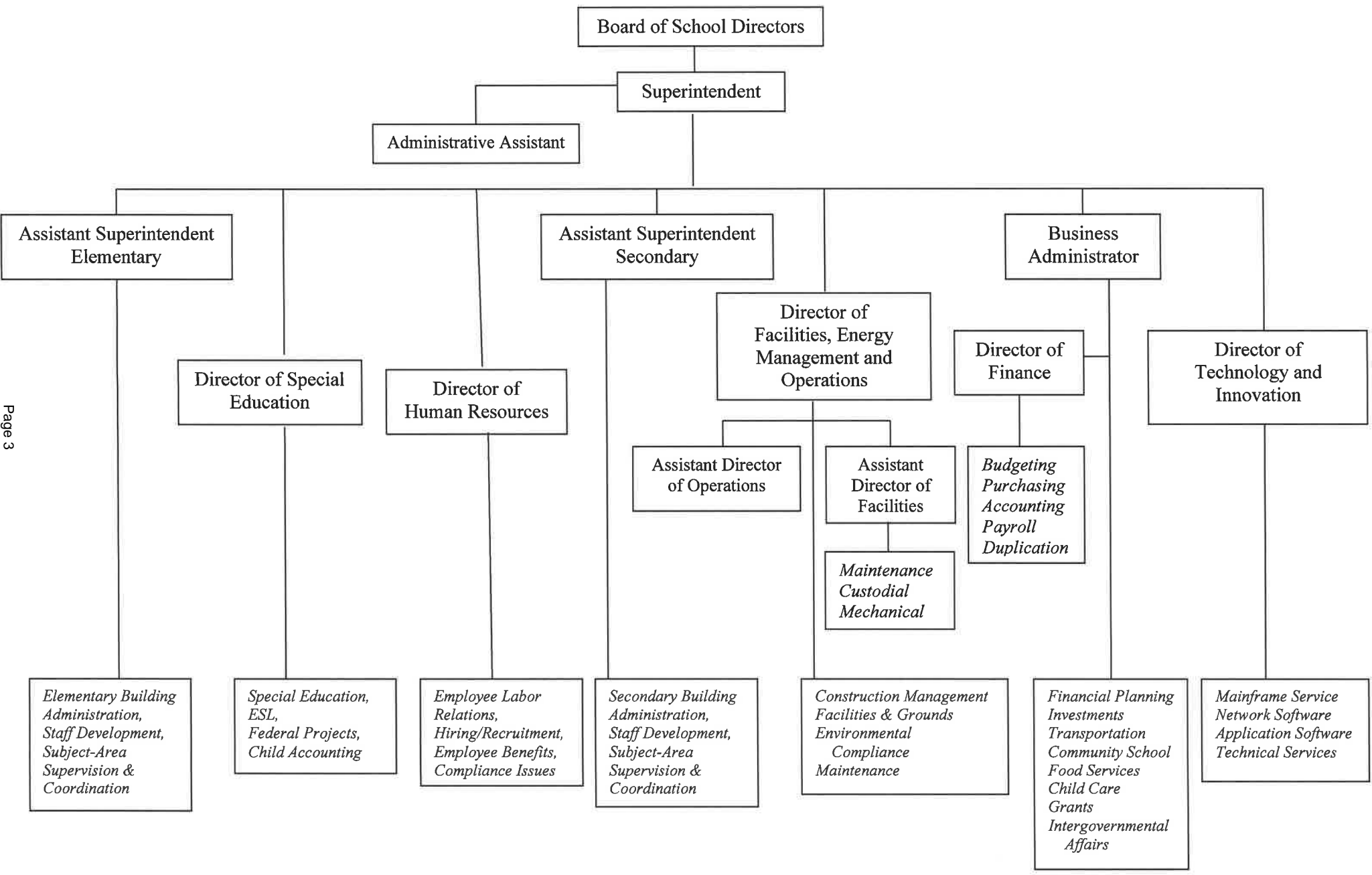
(267)893-2077 Ext :

Contact Person Telephone Number

(267)893-5800

Contact Person Fax Number

Central Bucks School District Organization Chart



CENTRAL BUCKS SCHOOL DISTRICT
Notes to the Basic Financial Statements
For the Year Ended June 30, 2020

amounts above the insured maximum, provided that approved collateral as provided by law therefore shall be pledged by the depository.

The deposit and investment policy of the School District adheres to state statutes. There were no deposit or investment transactions during the year that were in violation of either the state statutes or the policy of the School District.

The Pennsylvania School District Liquid Asset Fund (PSDLAF) was established as a common law trust organized under the laws of the Commonwealth of Pennsylvania. Shares of the PSDLAF are offered to certain Pennsylvania school districts, intermediate units, and area vocational-technical schools. The purpose of the PSDLAF is to enable governmental units to pool their available funds for investment in instruments authorized by Section 440.1 of the Pennsylvania Public School Code of 1949, as amended.

G. Short-Term Interfund Receivables/Payables

During the course of operations, transactions may occur between individual funds for goods provided or services rendered. These receivables and payables are classified as “due from other funds” or “due to other funds” on the governmental funds balance sheet. Short-term interfund loans are classified as “interfund receivables/payables.” These amounts are eliminated in the statement of net position, except for amounts due between governmental and business-type activities which, when present, are shown as internal balances.

H. Inventories

Inventory of purchased food and paper supplies within the Proprietary Fund is carried at cost using the first-in, first-out method of accounting and is subsequently charged to expense when consumed. Inventory of donated foods is valued at fair market value as established by the U.S. Department of Agriculture.

I. Capital Assets and Depreciation

Capital assets, which include property, plant, equipment, and construction in progress, are reported in the applicable governmental or business-type activities columns in the government-wide financial statements. The School District defines a capital asset as an asset with an initial individual cost equal to or greater than \$5,000 or purchased with debt proceeds and must also have an estimated useful life in excess of one year. Capital assets are recorded at historical cost or estimated historical cost if purchased or constructed. Donated capital assets are recorded at estimated fair market value at the date of donation.

The costs of normal maintenance and repairs that do not add to the value of the asset or materially extend asset lives are not capitalized.

CENTRAL BUCKS SCHOOL DISTRICT
Notes to the Basic Financial Statements
For the Year Ended June 30, 2020

Property, plant, and equipment of the School District are depreciated using the straight-line method over the following estimated useful lives:

	<u>Years</u>
Land improvements, buildings and building improvements	15-40
Furniture, fixtures, and equipment	5-20
Vehicles	8

J. Unearned Revenue

Unearned revenue arises when assets are recognized before the revenue recognition criteria have been satisfied. Unearned revenue arises when resources are received by the School District before it has a legal claim to them, as when grant monies are received prior to the incurrence of qualifying expenditures. In subsequent periods, when revenue recognition criteria are met or when the School District has a legal claim to the resources, the liability for unearned revenue is removed from the governmental funds balance sheet and revenue is recognized.

K. Long-Term Obligations

In the government-wide financial statements and the Proprietary Fund in the fund financial statements, long-term debt and other long-term obligations are reported as liabilities in the applicable governmental activities, business-type activities, or Proprietary Fund statement of net position. Bond premiums and discounts are deferred and amortized over the life of the bonds. Bonds payable are reported net of the applicable bond premium or discount.

In the fund financial statements, governmental funds recognize bond premiums and discounts, as well as bond issuance costs, during the current period. The face amount of debt issued is reported as other financing sources. Premiums received on debt issuances are reported as other financing sources while discounts on debt issuances are reported as other financing uses. Issuance costs, whether or not withheld from the actual debt proceeds received, are reported as debt service expenditures.

L. Compensated Absences

Full-time School District employees (excluding teachers) earn vacation based on job classifications and length of service. Unused vacation pay is due upon termination. School District employees accumulate sick time in accordance with their applicable contracts. Compensated absences are reported as accrued in the government-wide financial statements. Governmental funds report only matured compensated absences payable to currently terminated employees and are included in accrued salaries and benefits.

M. Deferred Outflows/Inflows of Resources

In addition to assets, the statement of net position reports a separate section for deferred outflows of resources. This separate financial statement element, deferred outflows of resources, represents a consumption of net position that applies to a future period(s) and so will not be recognized

<u>Val Number</u>	<u>Description</u>	<u>Justification</u>
16050	<p>REP Fund 51: Food service operating expenses are reported on the REP, but no revenue is reported in code 6600 representing receipts from students/adults for purchased food. Correct, or verify that all food is served free of charge to everyone at the school.</p> <p>REP, Fund 51, Food Service Revenue 6600: \$0.00 REP, Fund 51, Operating Exp (total): \$4,973,672.00</p>	All school lunches were free due to COVID-19.
42420	<p>Expenditure Detail: Total current year 2700-513 expenditure varies from prior year by 10%. Correct the data or enter a justification.</p> <p>2700-513, AFR Exp Detail: \$6,739,611.61 2700-513, PY AFR Amount: \$5,798,996.42</p>	Schools were closed as of March 2020 due to COVID-19 and the contracted carrier was not paid for the rest of the 2020 school year.
50430	<p>SESS - 2160 Social Work Services: SESS Schedule amounts for Special Education vary from prior year by 40% or more. Correct the data or enter a justification.</p> <p>SESS Schedule 2160: \$2,839.54 Prior Year SESS Schedule 2160: \$0.00</p>	Less travel in prior year due to COVID-19.

Amounts Expressed in Whole Dollars

	<u>General Fund</u> <u>(10)</u>	<u>Student Sponsored</u> <u>Activity Fund</u> <u>(21)</u>	<u>Public Purpose Trust</u> <u>(27)</u>	<u>Other Compt Approved</u> <u>(28)</u>	<u>Athletic / Activity</u> <u>(29)</u>
Assets And Deferred Outflows Of Resources					
Assets					
0100 Cash and Cash Equivalents	59,255,133				
0110 Investments	244,000				
0120 Taxes Receivable	7,923,819				
0130 Due From Other Funds	901,180				
0141 Due From Other Governments					
0142 State Revenue Receivable	13,313,227				
0143 Federal Revenue Receivable	2,597,042				
0145 Other Intergovernmental Revenue Receivable					
0146 Due from Primary Government					
0147 Due from Component Unit					
0150 Other Receivables	1,251,676				
0170 Inventories	41,415				
0180 Prepaid Expenses (Expenditures)	194,662				
0190 Other Current Assets	431,268				
Total Assets	\$86,153,422				
0910 Deferred Outflows of Resources					
Total Assets And Deferred Outflows Of Resources	\$86,153,422				

Amounts Expressed in Whole Dollars

<u>Capital Reserve (690.</u>	<u>Capital Reserve (1431)</u>	<u>Other Capital Projects</u>	<u>Debt Service</u>	<u>Permanent</u>
<u>1850)</u>	<u>(32)</u>	<u>Fund</u>	<u>(40)</u>	<u>(90)</u>
<u>(31)</u>		<u>(39)</u>		

Assets And Deferred Outflows Of Resources

Assets

0100	Cash and Cash Equivalents		376,091
0110	Investments		35,728,183
0120	Taxes Receivable		
0130	Due From Other Funds		
0141	Due From Other Governments		
0142	State Revenue Receivable		
0143	Federal Revenue Receivable		
0145	Other Intergovernmental Revenue Receivable		
0146	Due from Primary Government		
0147	Due from Component Unit		
0150	Other Receivables		
0170	Inventories		
0180	Prepaid Expenses (Expenditures)		
0190	Other Current Assets		

Total Assets	\$36,104,274
---------------------	---------------------

0910 Deferred Outflows of Resources

Total Assets And Deferred Outflows Of Resources	\$36,104,274
--	---------------------

Amounts Expressed in Whole Dollars

Total Governmental Funds

Assets And Deferred Outflows Of Resources

Assets	
0100 Cash and Cash Equivalents	59,631,224
0110 Investments	35,972,183
0120 Taxes Receivable	7,923,819
0130 Due From Other Funds	901,180
0141 Due From Other Governments	
0142 State Revenue Receivable	13,313,227
0143 Federal Revenue Receivable	2,597,042
0145 Other Intergovernmental Revenue Receivable	
0146 Due from Primary Government	
0147 Due from Component Unit	
0150 Other Receivables	1,251,676
0170 Inventories	41,415
0180 Prepaid Expenses (Expenditures)	194,662
0190 Other Current Assets	431,268
Total Assets	\$122,257,696
0910 Deferred Outflows of Resources	
Total Assets And Deferred Outflows Of Resources	\$122,257,696

Amounts Expressed in Whole Dollars

	<u>General Fund</u> <u>(10)</u>	<u>Student Sponsored</u> <u>Activity Fund</u> <u>(21)</u>	<u>Public Purpose Trust</u> <u>(27)</u>	<u>Other Compt Approved</u> <u>(28)</u>	<u>Athletic / Activity</u> <u>(29)</u>
Liabilities And Deferred Inflows Of Resources And Fund Balances					
Liabilities					
0400 Due to Other Funds					
0411 Due to Other Governments					
0412 Due to Primary Government					
0413 Due to Component Unit					
0420 Accounts Payable	2,256,167				
0430 Contracts Payable					
0440 Current Portion of Long-Term Debt					
0450 Short-Term Payables					
0461 Accrued Salaries and Benefits	1,269,275				
0462 Payroll Deductions and Withholding	36,285,267				
0480 Unearned Revenues	173,036				
0490 Other Current Liabilities	(2,522)				
Total Liabilities	\$39,981,223				
0950 Deferred Inflows of Resources	1,572,632				
Fund Balances					
0810 Nonspendable Fund Balance					
0820 Restricted Fund Balance					
0830 Committed Fund Balance					
0840 Assigned Fund Balance	11,823,461				
0850 Unassigned Fund Balance	32,776,106				
Total Fund Balances	\$44,599,567				
Total Liabilities, Deferred Inflows Of Resources And Fund Balances	\$86,153,422				

Amounts Expressed in Whole Dollars

<u>Capital Reserve (690.</u>	<u>Capital Reserve (1431)</u>	<u>Other Capital Projects</u>	<u>Debt Service</u>	<u>Permanent</u>
<u>1850)</u>	<u>(32)</u>	<u>Fund</u>	<u>(40)</u>	<u>(90)</u>
<u>(31)</u>		<u>(39)</u>		

Liabilities And Deferred Inflows Of Resources And Fund Balances

Liabilities				
0400	Due to Other Funds		46,107	
0411	Due to Other Governments			
0412	Due to Primary Government			
0413	Due to Component Unit			
0420	Accounts Payable		1,534,637	
0430	Contracts Payable			
0440	Current Portion of Long-Term Debt			
0450	Short-Term Payables			
0461	Accrued Salaries and Benefits			
0462	Payroll Deductions and Withholding			
0480	Unearned Revenues			
0490	Other Current Liabilities		485,892	
Total Liabilities			\$2,066,636	
0950	Deferred Inflows of Resources			
Fund Balances				
0810	Nonspendable Fund Balance			
0820	Restricted Fund Balance			
0830	Committed Fund Balance		34,037,638	
0840	Assigned Fund Balance			
0850	Unassigned Fund Balance			
Total Fund Balances			\$34,037,638	
Total Liabilities, Deferred Inflows Of Resources And Fund Balances			\$36,104,274	

Amounts Expressed in Whole Dollars

Total Governmental Funds

Liabilities And Deferred Inflows Of Resources And Fund Balances

Liabilities

0400 Due to Other Funds	46,107
0411 Due to Other Governments	
0412 Due to Primary Government	
0413 Due to Component Unit	
0420 Accounts Payable	3,790,804
0430 Contracts Payable	
0440 Current Portion of Long-Term Debt	
0450 Short-Term Payables	
0461 Accrued Salaries and Benefits	1,269,275
0462 Payroll Deductions and Withholding	36,285,267
0480 Unearned Revenues	173,036
0490 Other Current Liabilities	483,370

Total Liabilities \$42,047,859

0950 Deferred Inflows of Resources	1,572,632
------------------------------------	-----------

Fund Balances

0810 Nonspendable Fund Balance	
0820 Restricted Fund Balance	
0830 Committed Fund Balance	34,037,638
0840 Assigned Fund Balance	11,823,461
0850 Unassigned Fund Balance	32,776,106

Total Fund Balances \$78,637,205

Total Liabilities, Deferred Inflows Of Resources And Fund Balances \$122,257,696

Amounts Expressed in Whole Dollars	<u>General Fund</u> <u>(10)</u>	<u>Student Sponsored</u> <u>Activity Fund</u> <u>(21)</u>	<u>Public Purpose Trust</u> <u>(27)</u>	<u>Other Compt Approved</u> <u>(28)</u>	<u>Athletic / Activity</u> <u>(29)</u>
Revenues					
6000 Revenue from Local Sources	265,453,918				
7000 Revenue from State Sources	72,366,889				
8000 Revenue from Federal Sources	5,749,355				
Total Revenues	\$343,570,162				
Expenditures					
1000 Instruction	210,876,777				
2000 Support Services	100,677,966				
3000 Operation of Non-Instructional Services	7,383,803				
4000 Facilities Acquisition, Construction and Improvement Services					
5110 Debt Service	6,811,920				
5130 Refund of Prior Year Revenues / Receipts	30,751				
Total Expenditures	\$325,781,217				
Excess (Deficiency) Of Revenues Over Expenditures	\$17,788,945				
Other Financing Sources (Uses)					
9110 Face Value of Bonds Issued					
9120 Proceeds from Refunding of Bonds	13,855,000				
9130 Bond Premiums	1,195,079				
9200 Proceeds from Extended-Term Financing					
9300 Interfund Transfers - IN					
9400 Sale of or Compensation for Loss of Fixed Assets	7,250				
9710 Transfers from Component Units					
9720 Transfers from Primary Governments					
9910 Other Financing Sources Not Listed in the 9000 Series					
9990 Insurance Recoveries					
5120 Debt Service – Refunded Bonds	14,935,879				
5150 Bond Discounts					
5200 Interfund Transfers – Out	6,500,000				
5300 Transfers Out to Component Units/Primary Governments					
Total Other Financing Sources (Uses)	(\$6,378,550)				

Amounts Expressed in Whole Dollars	<u>Capital Reserve (690. 1850 (31)</u>	<u>Capital Reserve (1431) (32)</u>	<u>Other Capital Projects Fund (39)</u>	<u>Debt Service (40)</u>	<u>Permanent (90)</u>
Revenues					
6000 Revenue from Local Sources			935,725		
7000 Revenue from State Sources					
8000 Revenue from Federal Sources					
Total Revenues			\$935,725		
Expenditures					
1000 Instruction					
2000 Support Services			6,140,145		
3000 Operation of Non-Instructional Services					
4000 Facilities Acquisition, Construction and Improvement Services			14,851,032		
5110 Debt Service					
5130 Refund of Prior Year Revenues / Receipts					
Total Expenditures			\$20,991,177		
Excess (Deficiency) Of Revenues Over Expenditures			(\$20,055,452)		
Other Financing Sources (Uses)					
9110 Face Value of Bonds Issued					
9120 Proceeds from Refunding of Bonds					
9130 Bond Premiums					
9200 Proceeds from Extended-Term Financing					
9300 Interfund Transfers - IN			6,500,000		
9400 Sale of or Compensation for Loss of Fixed Assets			1,039,197		
9710 Transfers from Component Units					
9720 Transfers from Primary Governments					
9910 Other Financing Sources Not Listed in the 9000 Series					
9990 Insurance Recoveries					
5120 Debt Service – Refunded Bonds					
5150 Bond Discounts					
5200 Interfund Transfers – Out					
5300 Transfers Out to Component Units/Primary Governments					
Total Other Financing Sources (Uses)			\$7,539,197		

Amounts Expressed in Whole Dollars	<u>Total Governmental Funds</u>
Revenues	
6000 Revenue from Local Sources	266,389,643
7000 Revenue from State Sources	72,366,889
8000 Revenue from Federal Sources	5,749,355
Total Revenues	\$344,505,887
Expenditures	
1000 Instruction	210,876,777
2000 Support Services	106,818,111
3000 Operation of Non-Instructional Services	7,383,803
4000 Facilities Acquisition, Construction and Improvement Services	14,851,032
5110 Debt Service	6,811,920
5130 Refund of Prior Year Revenues / Receipts	30,751
Total Expenditures	\$346,772,394
Excess (Deficiency) Of Revenues Over Expenditures	(\$2,266,507)
Other Financing Sources (Uses)	
9110 Face Value of Bonds Issued	
9120 Proceeds from Refunding of Bonds	13,855,000
9130 Bond Premiums	1,195,079
9200 Proceeds from Extended-Term Financing	
9300 Interfund Transfers - IN	6,500,000
9400 Sale of or Compensation for Loss of Fixed Assets	1,046,447
9710 Transfers from Component Units	
9720 Transfers from Primary Governments	
9910 Other Financing Sources Not Listed in the 9000 Series	
9990 Insurance Recoveries	
5120 Debt Service – Refunded Bonds	14,935,879
5150 Bond Discounts	
5200 Interfund Transfers – Out	6,500,000
5300 Transfers Out to Component Units/Primary Governments	
Total Other Financing Sources (Uses)	\$1,160,647

Amounts Expressed in Whole Dollars	<u>General Fund</u> <u>(10)</u>	<u>Student Sponsored</u> <u>Activity Fund</u> <u>(21)</u>	<u>Public Purpose Trust</u> <u>(27)</u>	<u>Other Compt Approved</u> <u>(28)</u>	<u>Athletic / Activity</u> <u>(29)</u>
Special And Extraordinary Items					
9920 Special Items – Gains					
9930 Extraordinary Items – Gains					
5520 Special Items – Losses					
5530 Extraordinary Items – Losses					
Net Change In Fund Balances	\$11,410,395				
Fund Balance					
0001 Fund Balance - Beginning of Fiscal Year	33,189,172				
Fund Balance - End Of Year	\$44,599,567				

Amounts Expressed in Whole Dollars	<u>Capital Reserve (690.</u> <u>1850</u> <u>(31)</u>	<u>Capital Reserve (1431)</u> <u>(32)</u>	<u>Other Capital Projects</u> <u>Fund</u> <u>(39)</u>	<u>Debt Service</u> <u>(40)</u>	<u>Permanent</u> <u>(90)</u>
Special And Extraordinary Items					
9920 Special Items – Gains					
9930 Extraordinary Items – Gains					
5520 Special Items – Losses					
5530 Extraordinary Items – Losses					
Net Change In Fund Balances			(\$12,516,255)		
Fund Balance					
0001 Fund Balance - Beginning of Fiscal Year			46,553,893		
Fund Balance - End Of Year			\$34,037,638		

Amounts Expressed in Whole Dollars	<u>Total Governmental Funds</u>
Special And Extraordinary Items	
9920 Special Items – Gains	
9930 Extraordinary Items – Gains	
5520 Special Items – Losses	
5530 Extraordinary Items – Losses	
Net Change In Fund Balances	(\$1,105,860)
Fund Balance	
0001 Fund Balance - Beginning of Fiscal Year	79,743,065
Fund Balance - End Of Year	\$78,637,205

Amounts Expressed in Whole Dollars	<u>Food Service</u> <u>(51)</u>	<u>Child Care</u> <u>Operations</u> <u>(52)</u>	<u>Other Enterprise</u> <u>(58)</u>	<u>TOTAL</u>	<u>Internal Service</u> <u>(60)</u>
Assets And Deferred Outflows Of Resources					
Current Assets					
0100 Cash and Cash Equivalents	47,833			47,833	
0110 Investments	19,626			19,626	
0130 Due From Other Funds					
0141 Due From Other Governments					
0142 State Revenue Receivable					
0143 Federal Revenue Receivable	2,360,176			2,360,176	
0146 Due from Primary Government					
0147 Due from Component Unit					
0150 Other Receivables					
0170 Inventories					
0180 Prepaid Expenses (Expenditures)					
0190 Other Current Assets					
Total Current Assets	\$2,427,635			\$2,427,635	
Noncurrent Assets					
0211 Land					
0212 Site Improvements (Net)					
0220 Buildings and Building Improvements (Net)					
0230 Machinery, Equipment and Furniture (Net)	330,295			330,295	
0250 Construction in Progress					
0260 Long Term Prepayments					
0290 Other Noncurrent Assets					
Total Noncurrent Assets	\$330,295			\$330,295	
0910 Deferred Outflows of Resources					
Total Assets And Deferred Outflows Of Resources	\$2,757,930			\$2,757,930	

Amounts Expressed in Whole Dollars	<u>Food Service</u> <u>(51)</u>	<u>Child Care</u> <u>Operations</u> <u>(52)</u>	<u>Other Enterprise</u> <u>(58)</u>	<u>TOTAL</u>	<u>Internal Service</u> <u>(60)</u>
Liabilities And Deferred Inflows Of Resources And Net Position					
Current Liabilities					
0400 Due to Other Funds	855,073			855,073	
0411 Due to Other Governments					
0413 Due to Component Unit					
0420 Accounts Payable	883,558			883,558	
0430 Contracts Payable					
0440 Current Portion of Long-Term Debt					
0450 Short-Term Payables					
0461 Accrued Salaries and Benefits					
0462 Payroll Deductions and Withholding					
0480 Unearned Revenues	219,713			219,713	
0490 Other Current Liabilities					
Total Current Liabilities	\$1,958,344			\$1,958,344	
Noncurrent Liabilities					
0510 Bonds Payable					
0520 Extended-Term Financing Agreements Payable					
0530 Lease-Purchase Obligations					
0540 Accumulated Compensated Absences					
0550 Authority Lease Obligations					
0560 Other Post-Employment Benefits (OPEB)					
0570 Net Pension Liability					
0599 Other Noncurrent Liabilities					
Total Noncurrent Liabilities					
Total Liabilities	\$1,958,344			\$1,958,344	
0950 Deferred Inflows of Resources					
Net Position					
0791 Net Investment in Capital Assets					
0008 Restricted Net Position (0792 – 0798)	799,586			799,586	
0799 Unrestricted Net Position					
Total Net Position	\$799,586			\$799,586	
Total Liabilities And Deferred Inflows Of Resources And Net Position	\$2,757,930			\$2,757,930	

Amounts Expressed in Whole Dollars	<u>Food Service</u> <u>(51)</u>	<u>Child Care Operations</u> <u>(52)</u>	<u>Other Enterprise</u> <u>(58)</u>	<u>TOTAL</u>	<u>Internal Service</u> <u>(60)</u>
Operating Revenues					
6600 Food Service Revenue					
0071 Charges for Services					
0072 Other Operating Revenue	365,989			365,989	
Total Operating Revenues	\$365,989			\$365,989	
Operating Expenses					
100 Personnel Services – Salaries					
200 Personnel Services – Employee Benefits	6			6	
300 Purchased Professional and Technical Services	1,708			1,708	
400 Purchased Property Services	389,084			389,084	
500 Other Purchased Services	4,516,483			4,516,483	
600 Supplies	16,305			16,305	
740 Depreciation	53,142			53,142	
810 Dues and Fees	(3,056)			(3,056)	
880 Refunds of Prior Years' Receipts					
890 Miscellaneous Expenditures					
Total Operating Expenses	\$4,973,672			\$4,973,672	
Operating Income (Loss)	(\$4,607,683)			(\$4,607,683)	
Non Operating Revenues (Expenses)					
6500 Earnings on Investments					
6920 Contributions and Donations from Private Sources					
6930 Gains or Losses on Sale of Fixed Assets					
6991 Refunds of a Prior Year Expenditure					
7000 Revenue from State Sources	82,121			82,121	
8000 Revenue from Federal Sources	4,879,815			4,879,815	
9990 Insurance Recoveries					
820 Claims and Judgments Against the LEA					
830 Interest					
TOTAL Non Operating Revenues (Expenses)	\$4,961,936			\$4,961,936	
Income (Loss) Before Contributions And Transfers	\$354,253			\$354,253	

Amounts Expressed in Whole Dollars	<u>Food Service</u> <u>(51)</u>	<u>Child Care Operations</u> <u>(52)</u>	<u>Other Enterprise</u> <u>(58)</u>	<u>TOTAL</u>	<u>Internal Service</u> <u>(60)</u>
Contributions, Transfers, and Special and Extraordinary Items					
5200 Interfund Transfers – Out					
5300 Transfers Out to Component Units/Primary Governments					
5520 Special Items – Losses					
5530 Extraordinary Items – Losses					
9300 Interfund Transfers - IN					
9500 Capital Contributions					
9700 Transfers IN From Component Units/Primary Governments					
9920 Special Items – Gains					
9930 Extraordinary Items – Gains					
Change In Net Position	\$354,253			\$354,253	
0002 Net Position - Beginning of Fiscal Year	445,332			445,332	
0003 Accounting Changes / Residual Equity Transfers					
Net Position - End Of Year	\$799,585			\$799,585	

Amounts Expressed in Whole Dollars	<u>Food Service</u> <u>(51)</u>	<u>Child Care Operations</u> <u>(52)</u>	<u>Other Enterprise</u> <u>(58)</u>	<u>TOTAL</u>	<u>Internal Service(60)</u>
Cash Flows From Operating Activities					
0011 Cash Receipts From Users	3,797			3,797	
0012 Cash Receipts From Assessments Made to Other Funds					
0013 Cash Receipts From Earnings on Investments					
0014 Cash Receipts From Other Operating Revenue	304,465			304,465	
0015 Cash Payments To Employees For Services					
0016 Cash Payments For Insurance Claims					
0017 Cash Payments To Suppliers For Goods and Services	2,886,141			2,886,141	
0018 Cash Payments For Other Operating Expenses					
Net Cash Provided By (Used For) Operating Activities	(\$2,577,879)			(\$2,577,879)	
Cash Flows From Non-Capital Financing Activities					
0021 Receipts From Local Sources - 6000	10,000			10,000	
0022 Receipts From State Sources - 7000	91,108			91,108	
0023 Receipts From Federal Sources -8000	2,412,040			2,412,040	
0024 Notes and Loans Received (Repaid)					
0025 Interest Paid on Notes/Loans - 5100-830					
0026 Operating Transfers In (Out)/Residual Equity Trans					
0027 Operating Transfers In (Out) Primary Government / Comp Unit					
0028 Receipts From Refund of Prior Year Expenditures - 6991					
0029 Special and Extraordinary Gains (losses)					
0030 Receipts from Insurance Recoveries -9990					
Net Cash Prov By (Used for) Non-Capital Financing Activities	\$2,513,148			\$2,513,148	
Cash Flows From Capital and Related Financing Activities					
0031 Payments For Fac Acq, Const, and Imp - 4000					
0032 Gain / (Loss) on Sale of Fixed Assets - 6930					
0033 Proceeds From Extended Term Financing - 9200					
0034 Principal Paid on Financing Agreements					
0035 Interest Paid on Financing Agreements - 5100-830					
0036 (Inc) Dec in Contributed Capital					
Net Cash Prov By (Used for) Capital and Related Financing Activities					
Cash Flows From Investing Activities					
0041 Earnings on Investments - 6500	485			485	
0042 Purchase of Inv Securities / Deposits to Inv Pools					
0043 Receipts From Investment Pool Withdrawals					
0044 Proceeds from Sale and Maturity of Inv Securities					

LEA : 122092102 Central Bucks SD

Printed 12/1/2021 8:41:15 AM

0045 Loans Received (Paid)

Net Cash Prov By (Used for) Investing Activities	\$485	\$485
---	--------------	--------------

	<u>Food Service</u> <u>(51)</u>	<u>Child Care Operations</u> <u>(52)</u>	<u>Other Enterprise</u> <u>(58)</u>	<u>TOTAL</u>	<u>Internal Service</u> <u>(60)</u>
Net Increase (Decrease) in Cash Flows	(64,246)			(64,246)	
0004 Cash and Cash Equivalents Beginning of Year	16,413			16,413	
Cash and Cash Equivalents at Year End	(\$47,833)			(\$47,833)	

Reconciliation of Operating Income (Loss) To Net Cash Provided by (Used For) Operating Activities

0005 Operating Income (Loss) per REP	(4,607,683)			(4,607,683)	
--------------------------------------	-------------	--	--	-------------	--

Adjustments

0051 Depreciation and Net Amortization					
0052 Provision for Uncollectible Accounts					
0053 Other Adjustments					

Effect of Changes in Assets, Liabilities, Deferred Outflows and Deferred Inflows

0054 (Inc) Dec In Accounts Receivable (0120-0150)					
0055 Advances to Other Funds (0160)					
0056 (Inc) Dec in Inventories (0170)					
0057 (Inc) Dec in Prepaid Expenses (0180)					
0058 (Inc) Dec in Other Current or Noncurrent Assets					
0064 Deferred Outflows (0910)					
0059 Inc (Dec) in Accounts Payable (0400-0450)	2,029,069			2,029,069	
0060 Inc (Dec) in Accrued Salaries/Benefits (0461)					
0065 Inc (Dec) in Net Pension Liabilities (0570)					
0066 Inc (Dec) in Other Postemp Benefit Oblig (0560)					
0061 Inc (Dec) in Payroll Deductions/Withholding (0462)					
0062 Inc (Dec) in Unearned Revenue (0480)	734			734	
0063 Inc (Dec) in Other Current or Noncurrent Liabilities					
0067 Deferred Inflows (0950)					

Total Adjustments	\$2,029,803			\$2,029,803	
Cash Provided By (Used for) Total	(\$2,577,880)			(\$2,577,880)	

**COMBINED STATEMENT OF CASH FLOWS
SCHEDULE OF NONCASH INVESTING, CAPITAL, AND FINANCING ACTIVITIES**

Explanation of Transaction and Balance Sheet Effect	Amount
Total	

LEA : 122092102 Central Bucks SD

Printed 12/1/2021 8:41:20 AM

Amounts Expressed in Whole Dollars

Private Purpose Trust
(71)

Investment Trust
(72)

Pension Trust
(73)

Student Activity Custodial
(81)

Assets And Deferred Outflows Of Resources

Assets	
0100 Cash and Cash Equivalents	99,851
0110 Investments	1,211,341
0130 Due From Other Funds	
0140 Due from Other Governments, Primary Government and Component Units	
0150 Other Receivables	
0170 Inventories	
0180 Prepaid Expenses (Expenditures)	
0190 Other Current Assets	
0220 Buildings and Building Improvements (Net)	
0230 Machinery, Equipment and Furniture (Net)	
Total Assets	\$1,311,192
0910 Deferred Outflows of Resources	
Total Assets And Deferred Outflows Of Resources	\$1,311,192

LEA : 122092102 Central Bucks SD

Printed 12/1/2021 8:41:20 AM

Amounts Expressed in Whole Dollars

Other Custodial
(89)

Fiduciary Component Units
(98)

Total Fiduciary Funds

Assets And Deferred Outflows Of Resources

Assets

0100 Cash and Cash Equivalents			99,851
0110 Investments			1,211,341
0130 Due From Other Funds			
0140 Due from Other Governments, Primary Government and Component Units			
0150 Other Receivables			
0170 Inventories			
0180 Prepaid Expenses (Expenditures)			
0190 Other Current Assets			
0220 Buildings and Building Improvements (Net)			
0230 Machinery, Equipment and Furniture (Net)			

Total Assets **\$1,311,192**

0910 Deferred Outflows of Resources

Total Assets And Deferred Outflows Of Resources **\$1,311,192**

LEA : 122092102 Central Bucks SD

Printed 12/1/2021 8:41:20 AM

Amounts Expressed in Whole Dollars

Private Purpose Trust
(71)

Investment Trust
(72)

Pension Trust
(73)

Student Activity Custodial
(81)

Liabilities, Deferred Inflows Of Resources And Net Position

Liabilities

- 0400 Due to Other Funds
- 0410 Due to Other Governments, Primary Government and Component Units
- 0420 Accounts Payable
- 0430 Contracts Payable
- 0450 Short-Term Payables
- 0460 Payroll Accruals and Withholdings
- 0480 Unearned Revenues
- 0490 Other Current Liabilities

Total Liabilities

- 0950 Deferred Inflows of Resources

Net Position

- 0791 Net Investment in Capital Assets
- 0009 Restricted Net Position (0792 – 0798) 1,311,192
- 0799 Unrestricted Net Position

Total Net Position \$1,311,192

Total Liabilities, Deferred Inflows Of Resources And Net Position \$1,311,192

LEA : 122092102 Central Bucks SD

Printed 12/1/2021 8:41:20 AM

Amounts Expressed in Whole Dollars

Other Custodial
(89)

Fiduciary Component Units
(98)

Total Fiduciary Funds

Liabilities, Deferred Inflows Of Resources And Net Position

Liabilities

- 0400 Due to Other Funds
- 0410 Due to Other Governments, Primary Government and Component Units
- 0420 Accounts Payable
- 0430 Contracts Payable
- 0450 Short-Term Payables
- 0460 Payroll Accruals and Withholdings
- 0480 Unearned Revenues
- 0490 Other Current Liabilities

Total Liabilities

- 0950 Deferred Inflows of Resources

Net Position

- 0791 Net Investment in Capital Assets
- 0009 Restricted Net Position (0792 – 0798) 1,311,192
- 0799 Unrestricted Net Position

Total Net Position \$1,311,192

Total Liabilities, Deferred Inflows Of Resources And Net Position \$1,311,192

Amounts Expressed in Whole Dollars	<u>Private Purpose Trust</u> (71)	<u>Investment Trust</u> (72)	<u>Pension Trust</u> (73)	<u>Student Activity</u> <u>Custodial</u> (81)	<u>Other Custodial</u> (89)	<u>Fiduciary Component</u> <u>Units</u> (98)
Additions						
0091 Gifts and Contributions	18,498					
0095 Net Investment Earnings						
0092 Other Additions						
Deductions						
0093 Scholarships Awarded						
0094 Other Deductions						
Change In Net Position	\$18,498					
0006 Net Position – Beginning of Fiscal Year	1,292,694					
0007 Net Position Held in Trust for Pension Benefits						
Net Position - End of Fiscal Year	\$1,311,192					

Amounts Expressed in Whole Dollars	<u>Total Fiduciary Funds</u>
Additions	
0091 Gifts and Contributions	18,498
0095 Net Investment Earnings	
0092 Other Additions	
Deductions	
0093 Scholarships Awarded	
0094 Other Deductions	
Change in Net Position	\$18,498
0006 Net Position – Beginning of Fiscal Year	1,292,694
0007 Net Position Held in Trust for Pension Benefits	
Net Position - End of Fiscal Year	\$1,311,192

	<u>Revenue Reported In Current Year</u>	<u>Current Year Tax Accrual</u>	<u>Prior Year Tax Accrual</u>	<u>Taxes Collected In Current Year</u>
<u>Revenue from Local Sources</u>				
6111 Current Real Estate Taxes	222,069,419.78	169,849.70	357,740.66	222,257,310.74
6112 Interim Real Estate Taxes	1,264,235.69	240,495.39	348,291.11	1,372,031.41
6113 Public Utility Realty Taxes	248,300.68			248,300.68
6151 Current Act 511 Earned Income Taxes	27,901,250.13	5,191,210.00	5,681,919.33	28,391,959.46
6153 Current Act 511 Real Estate Transfer Taxes	6,113,716.09	560,266.21	259,104.91	5,812,554.79
6411 Delinquent Real Estate Taxes	1,209,143.77	549,251.31	598,130.08	1,258,022.54
6413 Delinquent Public Utility Realty Tax	97,495.13			97,495.13
6451 Delinquent Act 511 Earned Income Taxes	981,558.75	247,827.50	111,952.64	845,683.89
6500 Earnings on Investments	325,444.16			
6700 Revenues from LEA Activities	9,236.28			
6832 Federal IDEA Revenue Received as Pass Through	2,602,525.82			
6837 Federal Cares Act Revenue Received as Pass Through	332,620.00			
6910 Rentals	30,721.92			
6920 Contributions and Donations from Private Sources	9,564.43			
6941 Regular Day School Tuition	16,202.78			
6943 Adult Education Tuition	40,598.56			
6944 Receipts from Other LEAs in Pennsylvania - Education	447,422.43			
6980 Revenue from Community Services Activities	1,353,950.56			
6991 Refunds of a Prior Year Expenditure	153,414.10			
6999 Other Revenues Not Specified Above	247,097.39			
TOTAL Revenue from Local Sources	\$265,453,918.45	\$6,958,900.11	\$7,357,138.73	\$260,283,358.64

**Revenue Reported
In Current Year**

Revenue from State Sources

7111 Basic Education Funding-Formula	18,637,014.03		
7112 Basic Education Funding-Social Security	6,567,473.65		
7160 Tuition for Orphans Subsidy	94,988.21		
7271 Special Education funds for School-Aged Pupils	7,525,294.35		
7311 Pupil Transportation Subsidy	2,184,950.91		
7312 Nonpublic and Charter School Pupil Transportation Subsidy	650,265.00		
7320 Rental and Sinking Fund Payments / Building Reimbursement Subsidy	261,156.03		
7330 Health Services (Medical, Dental, Nurse, Act 25)	345,455.91		
7340 State Property Tax Reduction Allocation	6,277,433.81		
7505 Ready to Learn Block Grant	1,024,042.00		
7820 State Share of Retirement Contributions	28,798,814.80		
TOTAL Revenue from State Sources	\$72,366,888.70		

**Revenue Reported
In Current Year**

Revenue from Federal Sources

8514 NCLB, Title I - Improving the Academic Achievement of the Disadvantaged	1,249,436.00		
8515 NCLB, Title II - Preparing, Training and Recruiting High Quality Teachers and Principals	337,379.27		
8516 NCLB, Title III - Language Instruction for Limited English Proficient and Immigrant Students	92,641.25		
8517 NCLB, Title IV - 21St Century Schools	148,809.31		
8690 Other Restricted Federal Grants-in-Aid Through the Commonwealth of PA	26,221.74		
8741 Elementary and Secondary School Emergency Relief Fund (ESSER)	933,573.00		
8742 Governor's Emergency Education Relief Fund (GEER)	176,327.00		
8749 Other CARES Act Funding	1,935,433.66		
8810 School-Based Access Medicaid Reimbursement Program (SBAP) Reimbursements (Access)	785,180.86		
8820 Medical Assistance Reimbursement for Administrative Claiming (Quarterly) Program	64,352.72		
TOTAL Revenue from Federal Sources	\$5,749,354.81		

	Revenue Reported In Current Year			
<u>Other Financing Sources</u>				
9120 Proceeds from Refunding of Bonds	13,855,000.00			
9130 Bond Premiums	1,195,079.45			
9400 Sale of or Compensation for Loss of Fixed Assets	7,250.00			
TOTAL Other Financing Sources	\$15,057,329.45			
TOTAL FROM ALL SOURCES	\$358,627,491.41	\$6,958,900.11	\$7,357,138.73	\$260,283,358.64

LEA : 122092102 Central Bucks SD

Printed 12/1/2021 8:41:32 AM

	<u>General Fund (10)</u>	<u>Student Sponsored Activity Fund (21)</u>	<u>Public Purpose Trust (27)</u>	<u>Other Compt Approved (28)</u>	<u>Athletic / Activity (29)</u>	<u>Capital Reserve (690, 1850) (31)</u>
6000 Revenue from Local Sources						
6111 Current Real Estate Taxes	222,069,419.78					
6112 Interim Real Estate Taxes	1,264,235.69					
6113 Public Utility Realty Taxes	248,300.68					
6151 Current Act 511 Earned Income Taxes	27,901,250.13					
6153 Current Act 511 Real Estate Transfer Taxes	6,113,716.09					
6411 Delinquent Real Estate Taxes	1,209,143.77					
6413 Delinquent Public Utility Realty Tax	97,495.13					
6451 Delinquent Act 511 Earned Income Taxes	981,558.75					
6500 Earnings on Investments	325,444.16					
6700 Revenues from LEA Activities	9,236.28					
6832 Federal IDEA Revenue Received as Pass Through	2,602,525.82					
6837 Federal Cares Act Revenue Received as Pass Through	332,620.00					
6910 Rentals	30,721.92					
6920 Contributions and Donations from Private Sources	9,564.43					
6941 Regular Day School Tuition	16,202.78					
6943 Adult Education Tuition	40,598.56					
6944 Receipts from Other LEAs in Pennsylvania - Education	447,422.43					
6980 Revenue from Community Services Activities	1,353,950.56					
6991 Refunds of a Prior Year Expenditure	153,414.10					
6999 Other Revenues Not Specified Above	247,097.39					
6000 Total Revenue from Local Sources	\$265,453,918.45					
7000 Revenue from State Sources						
7111 Basic Education Funding-Formula	18,637,014.03					
7112 Basic Education Funding-Social Security	6,567,473.65					
7160 Tuition for Orphans Subsidy	94,988.21					
7271 Special Education funds for School-Aged Pupils	7,525,294.35					
7311 Pupil Transportation Subsidy	2,184,950.91					
7312 Nonpublic and Charter School Pupil Transportation Subsidy	650,265.00					
7320 Rental and Sinking Fund Payments / Building Reimbursement Subsidy	261,156.03					
7330 Health Services (Medical, Dental, Nurse, Act 25)	345,455.91					
7340 State Property Tax Reduction Allocation	6,277,433.81					
7505 Ready to Learn Block Grant	1,024,042.00					
7820 State Share of Retirement Contributions	28,798,814.80					
7000 Total Revenue from State Sources	\$72,366,888.70					

LEA : 122092102 Central Bucks SD

Printed 12/1/2021 8:41:32 AM

	<u>Capital Reserve</u> <u>(1431) (32)</u>	<u>Other Capital</u> <u>Projects Fund (39)</u>	<u>Debt Service (40)</u>	<u>Permanent (90)</u>	<u>Total</u>
6000 Revenue from Local Sources					
6111 Current Real Estate Taxes					222,069,419.78
6112 Interim Real Estate Taxes					1,264,235.69
6113 Public Utility Realty Taxes					248,300.68
6151 Current Act 511 Earned Income Taxes					27,901,250.13
6153 Current Act 511 Real Estate Transfer Taxes					6,113,716.09
6411 Delinquent Real Estate Taxes					1,209,143.77
6413 Delinquent Public Utility Realty Tax					97,495.13
6451 Delinquent Act 511 Earned Income Taxes					981,558.75
6500 Earnings on Investments		490,898.00			816,342.16
6700 Revenues from LEA Activities		444,740.00			453,976.28
6832 Federal IDEA Revenue Received as Pass Through					2,602,525.82
6837 Federal Cares Act Revenue Received as Pass Through					332,620.00
6910 Rentals					30,721.92
6920 Contributions and Donations from Private Sources		87.00			9,651.43
6941 Regular Day School Tuition					16,202.78
6943 Adult Education Tuition					40,598.56
6944 Receipts from Other LEAs in Pennsylvania - Education					447,422.43
6980 Revenue from Community Services Activities					1,353,950.56
6991 Refunds of a Prior Year Expenditure					153,414.10
6999 Other Revenues Not Specified Above					247,097.39
6000 Total Revenue from Local Sources		\$935,725.00			\$266,389,643.45
7000 Revenue from State Sources					
7111 Basic Education Funding-Formula					18,637,014.03
7112 Basic Education Funding-Social Security					6,567,473.65
7160 Tuition for Orphans Subsidy					94,988.21
7271 Special Education funds for School-Aged Pupils					7,525,294.35
7311 Pupil Transportation Subsidy					2,184,950.91
7312 Nonpublic and Charter School Pupil Transportation Subsidy					650,265.00
7320 Rental and Sinking Fund Payments / Building Reimbursement Subsidy					261,156.03
7330 Health Services (Medical, Dental, Nurse, Act 25)					345,455.91
7340 State Property Tax Reduction Allocation					6,277,433.81
7505 Ready to Learn Block Grant					1,024,042.00
7820 State Share of Retirement Contributions					28,798,814.80
7000 Total Revenue from State Sources					\$72,366,888.70

	<u>General Fund (10)</u>	<u>Student Sponsored Activity Fund (21)</u>	<u>Public Purpose Trust (27)</u>	<u>Other Compt Approved (28)</u>	<u>Athletic / Activity (29)</u>	<u>Capital Reserve (690, 1850) (31)</u>
8000 Revenue from Federal Sources						
8514 NCLB, Title I - Improving the Academic Achievement of the Disadvantaged	1,249,436.00					
8515 NCLB, Title II - Preparing, Training and Recruiting High Quality Teachers and Principals	337,379.27					
8516 NCLB, Title III - Language Instruction for Limited English Proficient and Immigrant Students	92,641.25					
8517 NCLB, Title IV - 21st Century Schools	148,809.31					
8690 Other Restricted Federal Grants-in-Aid Through the Commonwealth of PA	26,221.74					
8741 Elementary and Secondary School Emergency Relief Fund (ESSER)	933,573.00					
8742 Governor's Emergency Education Relief Fund (GEER)	176,327.00					
8749 Other CARES Act Funding	1,935,433.66					
8810 School-Based Access Medicaid Reimbursement Program (SBAP) Reimbursements (Access)	785,180.86					
8820 Medical Assistance Reimbursement for Administrative Claiming (Quarterly) Program	64,352.72					
8000 Total Revenue from Federal Sources	\$5,749,354.81					
9000 Other Financing Sources						
9120 Proceeds from Refunding of Bonds	13,855,000.00					
9130 Bond Premiums	1,195,079.45					
9310 General Fund Transfers						
9400 Sale of or Compensation for Loss of Fixed Assets	7,250.00					
9000 Total Other Financing Sources	\$15,057,329.45					
Total From All Sources	\$358,627,491.41					

	<u>Capital Reserve</u> <u>(1431) (32)</u>	<u>Other Capital</u> <u>Projects Fund (39)</u>	<u>Debt Service (40)</u>	<u>Permanent (90)</u>	<u>Total</u>
8000 Revenue from Federal Sources					
8514 NCLB, Title I - Improving the Academic Achievement of the Disadvantaged					1,249,436.00
8515 NCLB, Title II - Preparing, Training and Recruiting High Quality Teachers and Principals					337,379.27
8516 NCLB, Title III - Language Instruction for Limited English Proficient and Immigrant Students					92,641.25
8517 NCLB, Title IV - 21st Century Schools					148,809.31
8690 Other Restricted Federal Grants-in-Aid Through the Commonwealth of PA					26,221.74
8741 Elementary and Secondary School Emergency Relief Fund (ESSER)					933,573.00
8742 Governor's Emergency Education Relief Fund (GEER)					176,327.00
8749 Other CARES Act Funding					1,935,433.66
8810 School-Based Access Medicaid Reimbursement Program (SBAP) Reimbursements (Access)					785,180.86
8820 Medical Assistance Reimbursement for Administrative Claiming (Quarterly) Program					64,352.72
8000 Total Revenue from Federal Sources					\$5,749,354.81
9000 Other Financing Sources					
9120 Proceeds from Refunding of Bonds					13,855,000.00
9130 Bond Premiums					1,195,079.45
9310 General Fund Transfers		6,500,000.00			6,500,000.00
9400 Sale of or Compensation for Loss of Fixed Assets		1,039,197.00			1,046,447.00
9000 Total Other Financing Sources		\$7,539,197.00			\$22,596,526.45
Total From All Sources		\$8,474,922.00			\$367,102,413.41

	<u>General Fund (10)</u>	<u>Student Sponsored Activity Fund (21)</u>	<u>Public Purpose Trust (27)</u>	<u>Other Compt Approved (28)</u>	<u>Athletic / Activity (29)</u>	<u>Capital Reserve (690. 1850) (31)</u>
Revenue from Local Sources	265,453,918.45					
Revenue from State Sources	72,366,888.70					
Revenue from Federal Sources	5,749,354.81					
Other Financing Sources	15,057,329.45					
Total From All Sources	\$358,627,491.41					

	<u>Capital Reserve (1431)</u> <u>(32)</u>	<u>Other Capital Projects</u> <u>Fund (39)</u>	<u>Debt Service (40)</u>	<u>Permanent (90)</u>	<u>Total</u>
Revenue from Local Sources		935,725.00			266,389,643.45
Revenue from State Sources					72,366,888.70
Revenue from Federal Sources					5,749,354.81
Other Financing Sources		7,539,197.00			22,596,526.45
Total From All Sources		\$8,474,922.00			\$367,102,413.41

General Fund (10)

	<u>Total</u>
1000 Instruction	
100 Personnel Services – Salaries	
100 Personnel Services – Salaries	118,410,993.04
Total Personnel Services – Salaries	\$118,410,993.04
200 Personnel Services – Employee Benefits	
210 Group Insurance – Contracted Provider	196,855.91
220 Social Security Contributions	8,671,478.21
230 PSERS Retirement Contributions	40,796,117.71
250 Unemployment Compensation	136,057.35
260 Workers’ Compensation	276,453.58
270 Group Insurance – Self-Insurance	21,608,292.05
291 Other Retirement Plans	29,460.00
Total Personnel Services – Employee Benefits	\$71,714,714.81
300 Purchased Professional and Technical Services	
322 Professional Educational Services – Ius	2,996,766.38
323 Professional Educational Services – Other Educational Agencies	506,317.00
329 Professional Educational Services – Other	1,712,374.80
330 Other Professional Services	544,726.37
Total Purchased Professional and Technical Services	\$5,760,184.55
400 Purchased Property Services	
430 Repairs and Maintenance Services	193,888.72
440 Rentals	276,529.65
Total Purchased Property Services	\$470,418.37
500 Other Purchased Services	
550 Printing and Binding	1,950.00
561 Tuition To Other School Districts Within the State	198,800.52
562 Tuition To Pennsylvania Charter Schools	3,300,086.83
563 Tuition To Nonpublic Schools	2,299,643.16
564 Tuition To Career and Technology Centers	5,050,217.20
566 Tuition To Institutions of Higher Education and Technical Institutes	(277.00)
567 Tuition To Approved Private Schools (APS) and PA Chartered Schools for the Deaf and Blind	240,712.07
568 Tuition To Private Residential Rehabilitative Institutions (PRRI) [In-State] and Detention Centers	104,962.59
569 Tuition – Other	909,839.76
580 Travel	20,573.05
594 IU Payment By Withholding for Institutionalized Children’s Programs – Special Classes	15,226.65
Total Other Purchased Services	\$12,141,734.83
600 Supplies	
610 General Supplies	1,282,205.81
620 Energy	5,431.10
640 Books and Periodicals	781,949.93
650 Supplies & Fees – Technology Related	253,326.00
Total Supplies	\$2,322,912.84
700 Property	
752 Capital Equipment – Original and Additional	26,231.91

General Fund (10)

1000 Instruction	<u>Total</u>
700 <u>Property</u>	
762 Capitalized Equipment - Replacement	23,923.60
Total Property	\$50,155.51
800 <u>Other Objects</u>	
810 Dues and Fees	5,663.00
Total Other Objects	\$5,663.00
Total 1000 Instruction	\$210,876,776.95

General Fund (10)

1100 Regular Programs – Elementary / Secondary

	<u>Elementary</u>	<u>Secondary</u>	<u>Federal</u>	<u>Total</u>
100 Personnel Services – Salaries				
100 Personnel Services – Salaries	46,357,252.45	46,914,465.53	710,041.94	93,981,759.92
Total Personnel Services – Salaries	\$46,357,252.45	\$46,914,465.53	\$710,041.94	\$93,981,759.92
200 Personnel Services – Employee Benefits				
210 Group Insurance – Contracted Provider	96,459.40	100,396.51		196,855.91
220 Social Security Contributions	3,404,386.42	3,445,826.78	53,791.94	6,904,005.14
230 PSERS Retirement Contributions	15,959,879.56	16,197,141.83	221,975.50	32,378,996.89
250 Unemployment Compensation	26,129.19	25,991.97	484.26	52,605.42
260 Workers' Compensation	36,011.47	(3,651.17)	16,091.66	48,451.96
270 Group Insurance – Self-Insurance	7,388,803.22	7,702,780.04	19,106.00	15,110,689.26
291 Other Retirement Plans	14,435.40	15,024.60		29,460.00
Total Personnel Services – Employee Benefits	\$26,926,104.66	\$27,483,510.56	\$311,449.36	\$54,721,064.58
300 Purchased Professional and Technical Services				
322 Professional Educational Services – Ius		17,500.00		17,500.00
329 Professional Educational Services – Other	3,989.35	14,480.00		18,469.35
330 Other Professional Services			15,675.00	15,675.00
Total Purchased Professional and Technical Services	\$3,989.35	\$31,980.00	\$15,675.00	\$51,644.35
400 Purchased Property Services				
430 Repairs and Maintenance Services	125,524.04	65,084.78		190,608.82
440 Rentals	166,643.72	109,885.93		276,529.65
Total Purchased Property Services	\$292,167.76	\$174,970.71		\$467,138.47
500 Other Purchased Services				
550 Printing and Binding		1,950.00		1,950.00
562 Tuition To Pennsylvania Charter Schools	997,420.79	1,307,379.11		2,304,799.90
568 Tuition To Private Residential Rehabilitative Institutions (PRRI) [In-State] and Detention Centers	9,072.62	9,442.93		18,515.55
580 Travel	1,153.91	5,329.34		6,483.25
Total Other Purchased Services	\$1,007,647.32	\$1,324,101.38		\$2,331,748.70
600 Supplies				
610 General Supplies	399,506.52	667,550.47	66,847.43	1,133,904.42
620 Energy	1,764.75	3,666.35		5,431.10
640 Books and Periodicals	352,595.95	423,261.29		775,857.24
650 Supplies & Fees – Technology Related	143,241.42	86,279.56		229,520.98
Total Supplies	\$897,108.64	\$1,180,757.67	\$66,847.43	\$2,144,713.74
700 Property				
752 Capital Equipment – Original and Additional		26,231.91		26,231.91
762 Capitalized Equipment - Replacement	70.00	23,853.60		23,923.60
Total Property	\$70.00	\$50,085.51		\$50,155.51
800 Other Objects				
810 Dues and Fees	109.00	4,710.00		4,819.00
Total Other Objects	\$109.00	\$4,710.00		\$4,819.00
Total 1100 Regular Programs – Elementary / Secondary	\$75,484,449.18	\$77,164,581.36	\$1,104,013.73	\$153,753,044.27

General Fund (10)

	<u>Elementary</u>	<u>Secondary</u>	<u>Federal</u>	<u>Total</u>
1110 Regular Programs				
100 Personnel Services – Salaries				
100 Personnel Services – Salaries	46,357,252.45	46,914,465.53		93,271,717.98
Total Personnel Services – Salaries	\$46,357,252.45	\$46,914,465.53		\$93,271,717.98
200 Personnel Services – Employee Benefits				
210 Group Insurance – Contracted Provider	96,459.40	100,396.51		196,855.91
220 Social Security Contributions	3,404,386.42	3,445,826.78		6,850,213.20
230 PSERS Retirement Contributions	15,959,879.56	16,197,141.83		32,157,021.39
250 Unemployment Compensation	26,129.19	25,991.97		52,121.16
260 Workers' Compensation	36,011.47	(3,651.17)		32,360.30
270 Group Insurance – Self-Insurance	7,388,803.22	7,702,780.04		15,091,583.26
291 Other Retirement Plans	14,435.40	15,024.60		29,460.00
Total Personnel Services – Employee Benefits	\$26,926,104.66	\$27,483,510.56		\$54,409,615.22
300 Purchased Professional and Technical Services				
322 Professional Educational Services – Ius		17,500.00		17,500.00
329 Professional Educational Services – Other	3,989.35	14,480.00		18,469.35
Total Purchased Professional and Technical Services	\$3,989.35	\$31,980.00		\$35,969.35
400 Purchased Property Services				
430 Repairs and Maintenance Services	125,524.04	65,084.78		190,608.82
440 Rentals	166,643.72	109,885.93		276,529.65
Total Purchased Property Services	\$292,167.76	\$174,970.71		\$467,138.47
500 Other Purchased Services				
550 Printing and Binding		1,950.00		1,950.00
562 Tuition To Pennsylvania Charter Schools	997,420.79	1,307,379.11		2,304,799.90
568 Tuition To Private Residential Rehabilitative Institutions (PRRI) [In-State] and Detention Centers	9,072.62	9,442.93		18,515.55
580 Travel	1,153.91	5,329.34		6,483.25
Total Other Purchased Services	\$1,007,647.32	\$1,324,101.38		\$2,331,748.70
600 Supplies				
610 General Supplies	399,506.52	667,550.47		1,067,056.99
620 Energy	1,764.75	3,666.35		5,431.10
640 Books and Periodicals	352,595.95	423,261.29		775,857.24
650 Supplies & Fees – Technology Related	143,241.42	86,279.56		229,520.98
Total Supplies	\$897,108.64	\$1,180,757.67		\$2,077,866.31
700 Property				
752 Capital Equipment – Original and Additional		26,231.91		26,231.91
762 Capitalized Equipment - Replacement	70.00	23,853.60		23,923.60
Total Property	\$70.00	\$50,085.51		\$50,155.51
800 Other Objects				
810 Dues and Fees	109.00	4,710.00		4,819.00
Total Other Objects	\$109.00	\$4,710.00		\$4,819.00
Total 1110 Regular Programs	\$75,484,449.18	\$77,164,581.36		\$152,649,030.54

General Fund (10)

	<u>Elementary</u>	<u>Secondary</u>	<u>Federal</u>	<u>Total</u>
1190 Federally-Funded Regular Programs				
100 Personnel Services – Salaries				
100 Personnel Services – Salaries			710,041.94	710,041.94
Total Personnel Services – Salaries			\$710,041.94	\$710,041.94
200 Personnel Services – Employee Benefits				
220 Social Security Contributions			53,791.94	53,791.94
230 PSERS Retirement Contributions			221,975.50	221,975.50
250 Unemployment Compensation			484.26	484.26
260 Workers' Compensation			16,091.66	16,091.66
270 Group Insurance – Self-Insurance			19,106.00	19,106.00
Total Personnel Services – Employee Benefits			\$311,449.36	\$311,449.36
300 Purchased Professional and Technical Services				
330 Other Professional Services			15,675.00	15,675.00
Total Purchased Professional and Technical Services			\$15,675.00	\$15,675.00
600 Supplies				
610 General Supplies			66,847.43	66,847.43
Total Supplies			\$66,847.43	\$66,847.43
Total 1190 Federally-Funded Regular Programs			\$1,104,013.73	\$1,104,013.73

General Fund (10)

1200 Special Programs – Elementary / Secondary

	<u>Elementary</u>	<u>Secondary</u>	<u>Federal</u>	<u>Total</u>
100 Personnel Services – Salaries				
100 Personnel Services – Salaries	11,853,488.32	10,218,705.94	1,316,375.82	23,388,570.08
Total Personnel Services – Salaries	\$11,853,488.32	\$10,218,705.94	\$1,316,375.82	\$23,388,570.08
200 Personnel Services – Employee Benefits				
220 Social Security Contributions	854,369.09	739,219.92	97,419.70	1,691,008.71
230 PSERS Retirement Contributions	4,095,166.90	3,510,106.59	453,945.35	8,059,218.84
250 Unemployment Compensation	42,144.61	40,718.06	322.50	83,185.17
260 Workers' Compensation	128,056.10	80,405.17	10,677.33	219,138.60
270 Group Insurance – Self-Insurance	3,309,641.06	2,726,001.56	260,598.37	6,296,240.99
Total Personnel Services – Employee Benefits	\$8,429,377.76	\$7,096,451.30	\$822,963.25	\$16,348,792.31
300 Purchased Professional and Technical Services				
322 Professional Educational Services – lus	1,432,845.63	1,432,845.63	113,575.12	2,979,266.38
323 Professional Educational Services – Other Educational Agencies	33,500.00	33,500.00	432,965.00	499,965.00
329 Professional Educational Services – Other	(152,997.73)	78,757.66	1,713,014.14	1,638,774.07
330 Other Professional Services	507,411.42	21,639.95		529,051.37
Total Purchased Professional and Technical Services	\$1,820,759.32	\$1,566,743.24	\$2,259,554.26	\$5,647,056.82
400 Purchased Property Services				
430 Repairs and Maintenance Services	3,279.90			3,279.90
Total Purchased Property Services	\$3,279.90			\$3,279.90
500 Other Purchased Services				
562 Tuition To Pennsylvania Charter Schools	152,370.27	842,916.66		995,286.93
563 Tuition To Nonpublic Schools	1,152,375.47	1,147,267.69		2,299,643.16
567 Tuition To Approved Private Schools (APS) and PA Chartered Schools for the Deaf and Blind	125,170.28	115,541.79		240,712.07
580 Travel	14,039.25	23.52		14,062.77
594 IU Payment By Withholding for Institutionalized Children’s Programs – Special Classes	7,917.86	7,308.79		15,226.65
Total Other Purchased Services	\$1,451,873.13	\$2,113,058.45		\$3,564,931.58
600 Supplies				
610 General Supplies	65,353.50	50,825.17	24,587.42	140,766.09
640 Books and Periodicals	2,752.31	2,920.38		5,672.69
650 Supplies & Fees – Technology Related	2,003.10		10,677.04	12,680.14
Total Supplies	\$70,108.91	\$53,745.55	\$35,264.46	\$159,118.92
800 Other Objects				
810 Dues and Fees	844.00			844.00
Total Other Objects	\$844.00			\$844.00
Total 1200 Special Programs – Elementary / Secondary	\$23,629,731.34	\$21,048,704.48	\$4,434,157.79	\$49,112,593.61

General Fund (10)

1210 Life Skills Support

	<u>Elementary</u>	<u>Secondary</u>	<u>Federal</u>	<u>Total</u>
100 Personnel Services – Salaries				
100 Personnel Services – Salaries	872,057.79	532,979.76		1,405,037.55
Total Personnel Services – Salaries	\$872,057.79	\$532,979.76		\$1,405,037.55
200 Personnel Services – Employee Benefits				
220 Social Security Contributions	60,256.14	37,709.48		97,965.62
230 PSERS Retirement Contributions	298,292.83	182,333.11		480,625.94
250 Unemployment Compensation		353.34		353.34
260 Workers' Compensation	22,487.22	11,649.96		34,137.18
270 Group Insurance – Self-Insurance	444,473.64	316,695.36		761,169.00
Total Personnel Services – Employee Benefits	\$825,509.83	\$548,741.25		\$1,374,251.08
600 Supplies				
610 General Supplies	3,131.30	931.90		4,063.20
Total Supplies	\$3,131.30	\$931.90		\$4,063.20
Total 1210 Life Skills Support	\$1,700,698.92	\$1,082,652.91		\$2,783,351.83

General Fund (10)

	<u>Elementary</u>	<u>Secondary</u>	<u>Federal</u>	<u>Total</u>
1220 Sensory Support				
100 Personnel Services – Salaries				
100 Personnel Services – Salaries	101,311.00	68,646.63		169,957.63
Total Personnel Services – Salaries	\$101,311.00	\$68,646.63		\$169,957.63
200 Personnel Services – Employee Benefits				
220 Social Security Contributions	6,779.36	5,136.48		11,915.84
230 PSERS Retirement Contributions	34,962.48	22,803.43		57,765.91
250 Unemployment Compensation	15.60	18.72		34.32
260 Workers' Compensation	518.40	622.08		1,140.48
270 Group Insurance – Self-Insurance	17,956.80	4,489.20		22,446.00
Total Personnel Services – Employee Benefits	\$60,232.64	\$33,069.91		\$93,302.55
500 Other Purchased Services				
580 Travel		23.52		23.52
Total Other Purchased Services		\$23.52		\$23.52
600 Supplies				
610 General Supplies	9,882.11	489.08		10,371.19
Total Supplies	\$9,882.11	\$489.08		\$10,371.19
Total 1220 Sensory Support	\$171,425.75	\$102,229.14		\$273,654.89

General Fund (10)

1230 Emotional Support

	<u>Elementary</u>	<u>Secondary</u>	<u>Federal</u>	<u>Total</u>
100 Personnel Services – Salaries				
100 Personnel Services – Salaries	1,700,792.18	1,267,069.18		2,967,861.36
Total Personnel Services – Salaries	\$1,700,792.18	\$1,267,069.18		\$2,967,861.36
200 Personnel Services – Employee Benefits				
220 Social Security Contributions	120,342.59	91,625.69		211,968.28
230 PSERS Retirement Contributions	582,037.24	436,243.89		1,018,281.13
250 Unemployment Compensation	783.12	406.38		1,189.50
260 Workers' Compensation	25,999.92	13,437.90		39,437.82
270 Group Insurance – Self-Insurance	728,903.76	389,249.40		1,118,153.16
Total Personnel Services – Employee Benefits	\$1,458,066.63	\$930,963.26		\$2,389,029.89
300 Purchased Professional and Technical Services				
329 Professional Educational Services – Other		284.29		284.29
Total Purchased Professional and Technical Services		\$284.29		\$284.29
600 Supplies				
610 General Supplies	5,985.19	4,562.42		10,547.61
Total Supplies	\$5,985.19	\$4,562.42		\$10,547.61
Total 1230 Emotional Support	\$3,164,844.00	\$2,202,879.15		\$5,367,723.15

General Fund (10)

1240 Academic Support

	<u>Elementary</u>	<u>Secondary</u>	<u>Federal</u>	<u>Total</u>
100 Personnel Services – Salaries				
100 Personnel Services – Salaries	7,201,249.08	6,988,348.97	1,316,375.82	15,505,973.87
Total Personnel Services – Salaries	\$7,201,249.08	\$6,988,348.97	\$1,316,375.82	\$15,505,973.87
200 Personnel Services – Employee Benefits				
220 Social Security Contributions	526,492.37	509,524.63	97,419.70	1,133,436.70
230 PSERS Retirement Contributions	2,504,614.01	2,402,437.20	453,945.35	5,360,996.56
250 Unemployment Compensation	39,842.83	38,899.46	322.50	79,064.79
260 Workers' Compensation	29,144.84	20,171.32	10,677.33	59,993.49
270 Group Insurance – Self-Insurance	1,246,489.70	1,269,857.97	260,598.37	2,776,946.04
Total Personnel Services – Employee Benefits	\$4,346,583.75	\$4,240,890.58	\$822,963.25	\$9,410,437.58
300 Purchased Professional and Technical Services				
322 Professional Educational Services – lus	1,432,845.63	1,432,845.63	113,575.12	2,979,266.38
323 Professional Educational Services – Other Educational Agencies	33,500.00	33,500.00	432,965.00	499,965.00
329 Professional Educational Services – Other	(184,380.02)	(184,380.02)	1,713,014.14	1,344,254.10
Total Purchased Professional and Technical Services	\$1,281,965.61	\$1,281,965.61	\$2,259,554.26	\$4,823,485.48
500 Other Purchased Services				
563 Tuition To Nonpublic Schools	1,085,974.37	1,085,974.37		2,171,948.74
580 Travel	1,033.07			1,033.07
Total Other Purchased Services	\$1,087,007.44	\$1,085,974.37		\$2,172,981.81
600 Supplies				
610 General Supplies	30,236.84	21,735.62	24,587.42	76,559.88
640 Books and Periodicals	1,222.57	2,920.38		4,142.95
650 Supplies & Fees – Technology Related			10,677.04	10,677.04
Total Supplies	\$31,459.41	\$24,656.00	\$35,264.46	\$91,379.87
Total 1240 Academic Support	\$13,948,265.29	\$13,621,835.53	\$4,434,157.79	\$32,004,258.61

General Fund (10)

	<u>Elementary</u>	<u>Secondary</u>	<u>Federal</u>	<u>Total</u>
1241 Learning Support – Public				
100 Personnel Services – Salaries				
100 Personnel Services – Salaries	7,201,249.08	6,988,348.97	1,316,375.82	15,505,973.87
Total Personnel Services – Salaries	\$7,201,249.08	\$6,988,348.97	\$1,316,375.82	\$15,505,973.87
200 Personnel Services – Employee Benefits				
220 Social Security Contributions	526,492.37	509,524.63	97,419.70	1,133,436.70
230 PSERS Retirement Contributions	2,504,614.01	2,402,437.20	453,945.35	5,360,996.56
250 Unemployment Compensation	39,842.83	38,899.46	322.50	79,064.79
260 Workers' Compensation	29,144.84	20,171.32	10,677.33	59,993.49
270 Group Insurance – Self-Insurance	1,246,489.70	1,269,857.97	260,598.37	2,776,946.04
Total Personnel Services – Employee Benefits	\$4,346,583.75	\$4,240,890.58	\$822,963.25	\$9,410,437.58
300 Purchased Professional and Technical Services				
322 Professional Educational Services – lus	1,432,845.63	1,432,845.63	113,575.12	2,979,266.38
323 Professional Educational Services – Other Educational Agencies	33,500.00	33,500.00	432,965.00	499,965.00
329 Professional Educational Services – Other	(184,380.02)	(184,380.02)	1,713,014.14	1,344,254.10
Total Purchased Professional and Technical Services	\$1,281,965.61	\$1,281,965.61	\$2,259,554.26	\$4,823,485.48
500 Other Purchased Services				
563 Tuition To Nonpublic Schools	1,085,974.37	1,085,974.37		2,171,948.74
Total Other Purchased Services	\$1,085,974.37	\$1,085,974.37		\$2,171,948.74
600 Supplies				
610 General Supplies	20,742.91	21,735.62	24,587.42	67,065.95
640 Books and Periodicals	835.50	2,456.28		3,291.78
650 Supplies & Fees – Technology Related			10,677.04	10,677.04
Total Supplies	\$21,578.41	\$24,191.90	\$35,264.46	\$81,034.77
Total 1241 Learning Support – Public	\$13,937,351.22	\$13,621,371.43	\$4,434,157.79	\$31,992,880.44

General Fund (10)

1243 Gifted Support

500 Other Purchased Services

	<u>Elementary</u>	<u>Secondary</u>	<u>Federal</u>	<u>Total</u>
580 Travel	1,033.07			1,033.07
Total Other Purchased Services	\$1,033.07			\$1,033.07

600 Supplies

610 General Supplies	9,493.93			9,493.93
640 Books and Periodicals	387.07	464.10		851.17
Total Supplies	\$9,881.00	\$464.10		\$10,345.10

Total 1243 Gifted Support

	\$10,914.07	\$464.10		\$11,378.17
--	--------------------	-----------------	--	--------------------

General Fund (10)

	<u>Elementary</u>	<u>Secondary</u>	<u>Federal</u>	<u>Total</u>
1270 Multi-Handicapped Support				
100 Personnel Services – Salaries				
100 Personnel Services – Salaries	198,141.78	55,361.56		253,503.34
Total Personnel Services – Salaries	\$198,141.78	\$55,361.56		\$253,503.34
200 Personnel Services – Employee Benefits				
220 Social Security Contributions	14,067.79	3,929.31		17,997.10
230 PSERS Retirement Contributions	68,223.44	19,105.28		87,328.72
250 Unemployment Compensation	67.08	35.10		102.18
260 Workers' Compensation	2,226.42	1,164.78		3,391.20
270 Group Insurance – Self-Insurance	75,133.56	36,697.44		111,831.00
Total Personnel Services – Employee Benefits	\$159,718.29	\$60,931.91		\$220,650.20
Total 1270 Multi-Handicapped Support	\$357,860.07	\$116,293.47		\$474,153.54

General Fund (10)

1290 Special Programs - Other Support

	<u>Elementary</u>	<u>Secondary</u>	<u>Federal</u>	<u>Total</u>
100 Personnel Services – Salaries				
100 Personnel Services – Salaries	1,779,936.49	1,306,299.84		3,086,236.33
Total Personnel Services – Salaries	\$1,779,936.49	\$1,306,299.84		\$3,086,236.33
200 Personnel Services – Employee Benefits				
220 Social Security Contributions	126,430.84	91,294.33		217,725.17
230 PSERS Retirement Contributions	607,036.90	447,183.68		1,054,220.58
250 Unemployment Compensation	1,435.98	1,005.06		2,441.04
260 Workers' Compensation	47,679.30	33,359.13		81,038.43
270 Group Insurance – Self-Insurance	796,683.60	709,012.19		1,505,695.79
Total Personnel Services – Employee Benefits	\$1,579,266.62	\$1,281,854.39		\$2,861,121.01
300 Purchased Professional and Technical Services				
329 Professional Educational Services – Other	31,382.29	262,853.39		294,235.68
330 Other Professional Services	507,411.42	21,639.95		529,051.37
Total Purchased Professional and Technical Services	\$538,793.71	\$284,493.34		\$823,287.05
400 Purchased Property Services				
430 Repairs and Maintenance Services	3,279.90			3,279.90
Total Purchased Property Services	\$3,279.90			\$3,279.90
500 Other Purchased Services				
562 Tuition To Pennsylvania Charter Schools	152,370.27	842,916.66		995,286.93
563 Tuition To Nonpublic Schools	66,401.10	61,293.32		127,694.42
567 Tuition To Approved Private Schools (APS) and PA Chartered Schools for the Deaf and Blind	125,170.28	115,541.79		240,712.07
580 Travel	13,006.18			13,006.18
594 IU Payment By Withholding for Institutionalized Children's Programs – Special Classes	7,917.86	7,308.79		15,226.65
Total Other Purchased Services	\$364,865.69	\$1,027,060.56		\$1,391,926.25
600 Supplies				
610 General Supplies	16,118.06	23,106.15		39,224.21
640 Books and Periodicals	1,529.74			1,529.74
650 Supplies & Fees – Technology Related	2,003.10			2,003.10
Total Supplies	\$19,650.90	\$23,106.15		\$42,757.05
800 Other Objects				
810 Dues and Fees	844.00			844.00
Total Other Objects	\$844.00			\$844.00
Total 1290 Special Programs - Other Support	\$4,286,637.31	\$3,922,814.28		\$8,209,451.59

General Fund (10)

1300 Vocational Education

500 Other Purchased Services

564 Tuition To Career and Technology Centers

Total Other Purchased Services

Total 1300 Vocational Education

	<u>Elementary</u>	<u>Secondary</u>	<u>Federal</u>	<u>Total</u>
		5,050,217.20		5,050,217.20
		\$5,050,217.20		\$5,050,217.20
		\$5,050,217.20		\$5,050,217.20

General Fund (10)

	<u>Elementary</u>	<u>Secondary</u>	<u>Federal</u>	<u>Total</u>
1400 Other Instructional Programs – Elementary / Secondary				
100 Personnel Services – Salaries				
100 Personnel Services – Salaries	712,111.53	323,258.76	5,292.75	1,040,663.04
Total Personnel Services – Salaries	\$712,111.53	\$323,258.76	\$5,292.75	\$1,040,663.04
200 Personnel Services – Employee Benefits				
220 Social Security Contributions	52,188.76	23,878.30	397.30	76,464.36
230 PSERS Retirement Contributions	244,597.24	111,488.99	1,815.75	357,901.98
250 Unemployment Compensation	187.98	78.78		266.76
260 Workers' Compensation	6,245.64	2,617.38		8,863.02
270 Group Insurance – Self-Insurance	145,066.98	56,294.82		201,361.80
Total Personnel Services – Employee Benefits	\$448,286.60	\$194,358.27	\$2,213.05	\$644,857.92
300 Purchased Professional and Technical Services				
329 Professional Educational Services – Other		55,131.38		55,131.38
Total Purchased Professional and Technical Services		\$55,131.38		\$55,131.38
500 Other Purchased Services				
561 Tuition To Other School Districts Within the State		198,800.52		198,800.52
566 Tuition To Institutions of Higher Education and Technical Institutes	(202.21)	(74.79)		(277.00)
568 Tuition To Private Residential Rehabilitative Institutions (PRRI) [In-State] and Detention Centers	43,223.52	43,223.52		86,447.04
569 Tuition – Other		909,839.76		909,839.76
580 Travel		27.03		27.03
Total Other Purchased Services	\$43,021.31	\$1,151,816.04		\$1,194,837.35
600 Supplies				
610 General Supplies	1,136.16	415.80		1,551.96
640 Books and Periodicals	306.60	113.40		420.00
650 Supplies & Fees – Technology Related	5,843.80	2,161.40		8,005.20
Total Supplies	\$7,286.56	\$2,690.60		\$9,977.16
Total 1400 Other Instructional Programs – Elementary / Secondary	\$1,210,706.00	\$1,727,255.05	\$7,505.80	\$2,945,466.85

General Fund (10)

	<u>Elementary</u>	<u>Secondary</u>	<u>Federal</u>	<u>Total</u>
1430 Homebound Instruction				
100 Personnel Services – Salaries				
100 Personnel Services – Salaries		366.90		366.90
Total Personnel Services – Salaries		\$366.90		\$366.90
200 Personnel Services – Employee Benefits				
220 Social Security Contributions		28.07		28.07
230 PSERS Retirement Contributions		58.89		58.89
250 Unemployment Compensation		0.78		0.78
260 Workers' Compensation		25.38		25.38
Total Personnel Services – Employee Benefits		\$113.12		\$113.12
300 Purchased Professional and Technical Services				
329 Professional Educational Services – Other		55,131.38		55,131.38
Total Purchased Professional and Technical Services		\$55,131.38		\$55,131.38
500 Other Purchased Services				
580 Travel		27.03		27.03
Total Other Purchased Services		\$27.03		\$27.03
Total 1430 Homebound Instruction		\$55,638.43		\$55,638.43

General Fund (10)

1440 Alternative Regular Education Programs

500 Other Purchased Services

	<u>Elementary</u>	<u>Secondary</u>	<u>Federal</u>	<u>Total</u>
561 Tuition To Other School Districts Within the State		198,800.52		198,800.52
568 Tuition To Private Residential Rehabilitative Institutions (PRRI) [In-State] and Detention Centers	43,223.52	43,223.52		86,447.04
569 Tuition – Other		909,839.76		909,839.76
Total Other Purchased Services	\$43,223.52	\$1,151,863.80		\$1,195,087.32
Total 1440 Alternative Regular Education Programs	\$43,223.52	\$1,151,863.80		\$1,195,087.32

General Fund (10)

1441 Adjudicated / Court-Placed Programs

500 Other Purchased Services

561 Tuition To Other School Districts Within the State

569 Tuition – Other

Total Other Purchased Services

Total 1441 Adjudicated / Court-Placed Programs

Elementary

Secondary

Federal

Total

198,800.52

198,800.52

930,614.62

930,614.62

\$1,129,415.14

\$1,129,415.14

\$1,129,415.14

\$1,129,415.14

General Fund (10)

1442 Alternative Education Programs

500 Other Purchased Services

568 Tuition To Private Residential Rehabilitative Institutions (PRRI) [In-State] and Detention Centers

569 Tuition – Other

Total Other Purchased Services

Total 1442 Alternative Education Programs

	<u>Elementary</u>	<u>Secondary</u>	<u>Federal</u>	<u>Total</u>
568 Tuition To Private Residential Rehabilitative Institutions (PRRI) [In-State] and Detention Centers	43,223.52	43,223.52		86,447.04
569 Tuition – Other		(20,774.86)		(20,774.86)
Total Other Purchased Services	\$43,223.52	\$22,448.66		\$65,672.18
Total 1442 Alternative Education Programs	\$43,223.52	\$22,448.66		\$65,672.18

General Fund (10)

	<u>Elementary</u>	<u>Secondary</u>	<u>Federal</u>	<u>Total</u>
1490 Additional Other Instructional Programs				
100 Personnel Services – Salaries				
100 Personnel Services – Salaries	712,111.53	322,891.86	5,292.75	1,040,296.14
Total Personnel Services – Salaries	\$712,111.53	\$322,891.86	\$5,292.75	\$1,040,296.14
200 Personnel Services – Employee Benefits				
220 Social Security Contributions	52,188.76	23,850.23	397.30	76,436.29
230 PSERS Retirement Contributions	244,597.24	111,430.10	1,815.75	357,843.09
250 Unemployment Compensation	187.98	78.00		265.98
260 Workers' Compensation	6,245.64	2,592.00		8,837.64
270 Group Insurance – Self-Insurance	145,066.98	56,294.82		201,361.80
Total Personnel Services – Employee Benefits	\$448,286.60	\$194,245.15	\$2,213.05	\$644,744.80
500 Other Purchased Services				
566 Tuition To Institutions of Higher Education and Technical Institutes	(202.21)	(74.79)		(277.00)
Total Other Purchased Services	(\$202.21)	(\$74.79)		(\$277.00)
600 Supplies				
610 General Supplies	1,136.16	415.80		1,551.96
640 Books and Periodicals	306.60	113.40		420.00
650 Supplies & Fees – Technology Related	5,843.80	2,161.40		8,005.20
Total Supplies	\$7,286.56	\$2,690.60		\$9,977.16
Total 1490 Additional Other Instructional Programs	\$1,167,482.48	\$519,752.82	\$7,505.80	\$1,694,741.10

General Fund (10)

1500 Nonpublic School Programs

Elementary Secondary Federal Total

300 Purchased Professional and Technical Services

323 Professional Educational Services – Other Educational Agencies 6,352.00 6,352.00

Total Purchased Professional and Technical Services \$6,352.00 \$6,352.00

600 Supplies

610 General Supplies 5,983.34 5,983.34

650 Supplies & Fees – Technology Related 3,119.68 3,119.68

Total Supplies \$9,103.02 \$9,103.02

Total 1500 Nonpublic School Programs \$15,455.02 \$15,455.02

General Fund (10)

2000 Support Services

Total

100 Personnel Services – Salaries

100 Personnel Services – Salaries 46,181,808.68

Total Personnel Services – Salaries \$46,181,808.68

200 Personnel Services – Employee Benefits

220 Social Security Contributions 3,371,122.69

230 PSERS Retirement Contributions 15,729,472.94

240 Tuition Reimbursement 215,071.99

250 Unemployment Compensation 88,124.48

260 Workers' Compensation 382,752.05

270 Group Insurance – Self-Insurance 11,137,230.62

291 Other Retirement Plans 221,075.53

Total Personnel Services – Employee Benefits \$31,144,850.30

300 Purchased Professional and Technical Services

310 Official / Administrative Services 785,630.24

329 Professional Educational Services – Other 105,341.65

330 Other Professional Services 939,682.59

340 Technical Services 420,625.83

350 Security / Safety Services 28,658.90

360 Employee Training and Development Services 40,526.28

Total Purchased Professional and Technical Services \$2,320,465.49

400 Purchased Property Services

410 Cleaning Services 649,316.19

420 Utility Services 370,877.07

430 Repairs and Maintenance Services 2,626,699.96

440 Rentals (132,685.51)

460 Extermination Services 33,619.07

490 Other Purchased Property Services 305,989.41

Total Purchased Property Services \$3,853,816.19

500 Other Purchased Services

511 Student Transportation Services from Another LEA Within the State 189,076.47

513 Contracted Carriers 6,739,611.61

515 Public Carriers 111,050.00

516 Student Transportation Services From the IU 1,048,901.08

520 Insurance – General 5,400.00

521 Fire Insurance 594,969.00

522 Automotive Liability Insurance 198,580.06

523 General Property and Liability Insurance 231,744.00

529 Other Insurance 44,113.00

530 Communications 704,758.34

541 Advertising Related to Federal Grant Awards 8,073.10

549 Other Advertising/Public Relations 21,943.20

550 Printing and Binding 1,545.00

580 Travel 52,314.02

595 IU Payments By Withholding 140,822.85

General Fund (10)

2000 Support Services

Total

500 Other Purchased Services

596 Direct Payments To Intermediate Units

84,756.00

Total Other Purchased Services

\$10,177,657.73

600 Supplies

610 General Supplies

2,277,180.95

620 Energy

3,436,850.28

630 Food

17,198.27

640 Books and Periodicals

101,014.17

650 Supplies & Fees – Technology Related

877,169.17

Total Supplies

\$6,709,412.84

700 Property

752 Capital Equipment – Original and Additional

58,249.73

762 Capitalized Equipment - Replacement

58,613.48

Total Property

\$116,863.21

800 Other Objects

810 Dues and Fees

173,091.12

Total Other Objects

\$173,091.12

Total 2000 Support Services

\$100,677,965.56

General Fund (10)

	<u>Elementary</u>	<u>Secondary</u>	<u>Federal</u>	<u>Total</u>
2100 Support Services – Students				
100 Personnel Services – Salaries				
100 Personnel Services – Salaries	4,155,782.00	4,366,805.73	11,101.98	8,829,644.49
Total Personnel Services – Salaries	\$4,155,782.00	\$4,366,805.73	\$11,101.98	\$8,829,644.49
200 Personnel Services – Employee Benefits				
220 Social Security Contributions	303,007.13	317,837.84	849.30	642,668.35
230 PSERS Retirement Contributions	1,422,695.84	1,500,865.16	3,831.30	3,028,023.19
250 Unemployment Compensation	764.68	894.42		1,816.66
260 Workers' Compensation	25,405.42	29,661.58		60,292.04
270 Group Insurance – Self-Insurance	747,272.51	907,464.03		1,801,070.30
291 Other Retirement Plans	2,441.98	2,578.49		5,020.47
Total Personnel Services – Employee Benefits	\$2,501,587.56	\$2,759,301.52	\$4,680.60	\$5,538,891.01
300 Purchased Professional and Technical Services				
329 Professional Educational Services – Other	21,755.16	54,737.45	3,000.00	79,492.61
330 Other Professional Services	71,255.68	40,284.98		111,540.66
340 Technical Services		2,500.00		2,500.00
Total Purchased Professional and Technical Services	\$93,010.84	\$97,522.43	\$3,000.00	\$193,533.27
500 Other Purchased Services				
530 Communications		500.00		500.00
580 Travel	110.07	56.71		1,843.32
Total Other Purchased Services	\$110.07	\$556.71		\$2,343.32
600 Supplies				
610 General Supplies	14,605.71	15,370.28		29,975.99
630 Food	57.59	62.38		119.97
640 Books and Periodicals	3,927.00	2,023.00		5,950.00
650 Supplies & Fees – Technology Related	239.52	259.48		499.00
Total Supplies	\$18,829.82	\$17,715.14		\$36,544.96
800 Other Objects				
810 Dues and Fees		45.00		1,208.00
Total Other Objects		\$45.00		\$1,208.00
Total 2100 Support Services – Students	\$6,769,320.29	\$7,241,946.53	\$18,782.58	\$14,602,165.05

General Fund (10)

	<u>Elementary</u>	<u>Secondary</u>	<u>Federal</u>	<u>Total</u>
2110 Supervision of Student Services				
100 Personnel Services – Salaries				
100 Personnel Services – Salaries	78,608.25	81,816.75		160,425.00
Total Personnel Services – Salaries	\$78,608.25	\$81,816.75		\$160,425.00
200 Personnel Services – Employee Benefits				
220 Social Security Contributions	5,329.93	5,547.48		10,877.41
230 PSERS Retirement Contributions	27,127.71	28,234.97		55,362.68
250 Unemployment Compensation	9.17	9.55		18.72
260 Workers' Compensation	303.76	316.16		619.92
270 Group Insurance – Self-Insurance	10,446.88	10,873.28		21,320.16
291 Other Retirement Plans	1,575.32	1,639.61		3,214.93
Total Personnel Services – Employee Benefits	\$44,792.77	\$46,621.05		\$91,413.82
Total 2110 Supervision of Student Services	\$123,401.02	\$128,437.80		\$251,838.82

General Fund (10)

	<u>Elementary</u>	<u>Secondary</u>	<u>Federal</u>	<u>Total</u>
2111 Supervision of Student Services – Head of Component				
100 Personnel Services – Salaries				
100 Personnel Services – Salaries	78,608.25	81,816.75		160,425.00
Total Personnel Services – Salaries	\$78,608.25	\$81,816.75		\$160,425.00
200 Personnel Services – Employee Benefits				
220 Social Security Contributions	5,329.93	5,547.48		10,877.41
230 PSERS Retirement Contributions	27,127.71	28,234.97		55,362.68
250 Unemployment Compensation	9.17	9.55		18.72
260 Workers' Compensation	303.76	316.16		619.92
270 Group Insurance – Self-Insurance	10,446.88	10,873.28		21,320.16
291 Other Retirement Plans	1,575.32	1,639.61		3,214.93
Total Personnel Services – Employee Benefits	\$44,792.77	\$46,621.05		\$91,413.82
Total 2111 Supervision of Student Services – Head of Component	\$123,401.02	\$128,437.80		\$251,838.82

General Fund (10)

	<u>Elementary</u>	<u>Secondary</u>	<u>Federal</u>	<u>Total</u>
2120 Guidance Services				
100 Personnel Services – Salaries				
100 Personnel Services – Salaries	1,785,867.31	3,314,488.29		5,100,355.60
Total Personnel Services – Salaries	\$1,785,867.31	\$3,314,488.29		\$5,100,355.60
200 Personnel Services – Employee Benefits				
220 Social Security Contributions	131,692.49	242,169.49		373,861.98
230 PSERS Retirement Contributions	612,947.94	1,148,700.40		1,761,648.34
250 Unemployment Compensation	297.96	691.08		989.04
260 Workers' Compensation	9,901.44	22,914.90		32,816.34
270 Group Insurance – Self-Insurance	294,414.49	724,166.53		1,018,581.02
Total Personnel Services – Employee Benefits	\$1,049,254.32	\$2,138,642.40		\$3,187,896.72
300 Purchased Professional and Technical Services				
329 Professional Educational Services – Other	21,755.16	54,737.45		76,492.61
340 Technical Services		2,500.00		2,500.00
Total Purchased Professional and Technical Services	\$21,755.16	\$57,237.45		\$78,992.61
500 Other Purchased Services				
530 Communications		500.00		500.00
Total Other Purchased Services		\$500.00		\$500.00
600 Supplies				
610 General Supplies	5,167.08	10,273.51		15,440.59
Total Supplies	\$5,167.08	\$10,273.51		\$15,440.59
800 Other Objects				
810 Dues and Fees		45.00		45.00
Total Other Objects		\$45.00		\$45.00
Total 2120 Guidance Services	\$2,862,043.87	\$5,521,186.65		\$8,383,230.52

General Fund (10)

2130 Attendance Services

Elementary

Secondary

Federal

Total

100 Personnel Services – Salaries

100 Personnel Services – Salaries

295,954.78

Total Personnel Services – Salaries

\$295,954.78

200 Personnel Services – Employee Benefits

220 Social Security Contributions

20,974.08

230 PSERS Retirement Contributions

100,630.89

250 Unemployment Compensation

157.56

260 Workers' Compensation

5,225.04

270 Group Insurance – Self-Insurance

146,333.76

Total Personnel Services – Employee Benefits

\$273,321.33

Total 2130 Attendance Services

\$569,276.11

General Fund (10)

	<u>Elementary</u>	<u>Secondary</u>	<u>Federal</u>	<u>Total</u>
2140 Psychological Services				
100 Personnel Services – Salaries				
100 Personnel Services – Salaries	889,627.17	496,543.94		1,386,171.11
Total Personnel Services – Salaries	\$889,627.17	\$496,543.94		\$1,386,171.11
200 Personnel Services – Employee Benefits				
220 Social Security Contributions	65,300.81	36,352.41		101,653.22
230 PSERS Retirement Contributions	306,643.90	165,886.46		472,530.36
250 Unemployment Compensation	167.70	86.58		254.28
260 Workers' Compensation	5,572.80	2,877.12		8,449.92
270 Group Insurance – Self-Insurance	161,611.20	71,827.20		233,438.40
Total Personnel Services – Employee Benefits	\$539,296.41	\$277,029.77		\$816,326.18
300 Purchased Professional and Technical Services				
329 Professional Educational Services – Other			3,000.00	3,000.00
330 Other Professional Services	33,250.00			33,250.00
Total Purchased Professional and Technical Services	\$33,250.00		\$3,000.00	\$36,250.00
500 Other Purchased Services				
580 Travel	110.07	56.71		166.78
Total Other Purchased Services	\$110.07	\$56.71		\$166.78
600 Supplies				
610 General Supplies	9,026.03	4,649.78		13,675.81
640 Books and Periodicals	3,927.00	2,023.00		5,950.00
Total Supplies	\$12,953.03	\$6,672.78		\$19,625.81
Total 2140 Psychological Services	\$1,475,236.68	\$780,303.20	\$3,000.00	\$2,258,539.88

General Fund (10)

	<u>Elementary</u>	<u>Secondary</u>	<u>Federal</u>	<u>Total</u>
2150 Speech Pathology and Audiology Services				
100 Personnel Services – Salaries				
100 Personnel Services – Salaries	1,253,974.21	313,942.93	11,101.98	1,579,019.12
Total Personnel Services – Salaries	\$1,253,974.21	\$313,942.93	\$11,101.98	\$1,579,019.12
200 Personnel Services – Employee Benefits				
220 Social Security Contributions	90,872.24	23,139.17	849.30	114,860.71
230 PSERS Retirement Contributions	429,204.86	107,374.28	3,831.30	540,410.44
250 Unemployment Compensation	259.15	73.95		333.10
260 Workers' Compensation	8,611.10	2,452.38		11,063.48
270 Group Insurance – Self-Insurance	256,105.03	73,844.21		329,949.24
Total Personnel Services – Employee Benefits	\$785,052.38	\$206,883.99	\$4,680.60	\$996,616.97
Total 2150 Speech Pathology and Audiology Services	\$2,039,026.59	\$520,826.92	\$15,782.58	\$2,575,636.09

General Fund (10)

2160 Social Work Services

Elementary

Secondary

Federal

Total

500 Other Purchased Services

580 Travel

1,676.54

Total Other Purchased Services

\$1,676.54

800 Other Objects

810 Dues and Fees

1,163.00

Total Other Objects

\$1,163.00

Total 2160 Social Work Services

\$2,839.54

General Fund (10)

	<u>Elementary</u>	<u>Secondary</u>	<u>Federal</u>	<u>Total</u>
2190 Other Student Services				
100 Personnel Services – Salaries				
100 Personnel Services – Salaries	147,705.06	160,013.82		307,718.88
Total Personnel Services – Salaries	\$147,705.06	\$160,013.82		\$307,718.88
200 Personnel Services – Employee Benefits				
220 Social Security Contributions	9,811.66	10,629.29		20,440.95
230 PSERS Retirement Contributions	46,771.43	50,669.05		97,440.48
250 Unemployment Compensation	30.70	33.26		63.96
260 Workers' Compensation	1,016.32	1,101.02		2,117.34
270 Group Insurance – Self-Insurance	24,694.91	26,752.81		51,447.72
291 Other Retirement Plans	866.66	938.88		1,805.54
Total Personnel Services – Employee Benefits	\$83,191.68	\$90,124.31		\$173,315.99
300 Purchased Professional and Technical Services				
330 Other Professional Services	38,005.68	40,284.98		78,290.66
Total Purchased Professional and Technical Services	\$38,005.68	\$40,284.98		\$78,290.66
600 Supplies				
610 General Supplies	412.60	446.99		859.59
630 Food	57.59	62.38		119.97
650 Supplies & Fees – Technology Related	239.52	259.48		499.00
Total Supplies	\$709.71	\$768.85		\$1,478.56
Total 2190 Other Student Services	\$269,612.13	\$291,191.96		\$560,804.09

General Fund (10)

2200 Support Services – Instructional Staff

	<u>Elementary</u>	<u>Secondary</u>	<u>Federal</u>	<u>Total</u>
100 Personnel Services – Salaries				
100 Personnel Services – Salaries	4,225,817.00	3,505,055.12	10,665.63	7,741,537.75
Total Personnel Services – Salaries	\$4,225,817.00	\$3,505,055.12	\$10,665.63	\$7,741,537.75
200 Personnel Services – Employee Benefits				
220 Social Security Contributions	310,693.25	258,225.56	780.35	569,699.16
230 PSERS Retirement Contributions	1,445,975.93	1,188,107.39	3,680.63	2,637,763.95
240 Tuition Reimbursement	101,755.61	105,908.90		207,664.51
250 Unemployment Compensation	989.21	781.08		1,770.29
260 Workers' Compensation	32,813.26	25,893.74		58,707.00
270 Group Insurance – Self-Insurance	839,272.80	699,466.80		1,538,739.60
291 Other Retirement Plans	17,875.94	18,934.29		36,810.23
Total Personnel Services – Employee Benefits	\$2,749,376.00	\$2,297,317.76	\$4,460.98	\$5,051,154.74
300 Purchased Professional and Technical Services				
329 Professional Educational Services – Other	16,888.75	8,812.29		25,701.04
330 Other Professional Services		1,450.00		1,450.00
340 Technical Services	19,537.17	20,334.60		39,871.77
360 Employee Training and Development Services	26,175.55	3,704.63	4,304.00	34,184.18
Total Purchased Professional and Technical Services	\$62,601.47	\$34,301.52	\$4,304.00	\$101,206.99
400 Purchased Property Services				
430 Repairs and Maintenance Services	21,058.43	34,317.96		55,376.39
Total Purchased Property Services	\$21,058.43	\$34,317.96		\$55,376.39
500 Other Purchased Services				
530 Communications	30,036.76	31,262.76		61,299.52
580 Travel	4,581.57	4,043.96	30,191.56	38,817.09
Total Other Purchased Services	\$34,618.33	\$35,306.72	\$30,191.56	\$100,116.61
600 Supplies				
610 General Supplies	18,355.32	51,637.35	160.00	70,152.67
630 Food	63.85	113.64		177.49
640 Books and Periodicals	33,755.96	56,599.40		90,355.36
650 Supplies & Fees – Technology Related	64,047.49	576,958.00		641,005.49
Total Supplies	\$116,222.62	\$685,308.39	\$160.00	\$801,691.01
700 Property				
752 Capital Equipment – Original and Additional	2,578.91			2,578.91
762 Capitalized Equipment - Replacement	84.00			84.00
Total Property	\$2,662.91			\$2,662.91
800 Other Objects				
810 Dues and Fees	460.27	1,905.67		2,365.94
Total Other Objects	\$460.27	\$1,905.67		\$2,365.94
Total 2200 Support Services – Instructional Staff	\$7,212,817.03	\$6,593,513.14	\$49,782.17	\$13,856,112.34

General Fund (10)

	<u>Elementary</u>	<u>Secondary</u>	<u>Federal</u>	<u>Total</u>
2220 Technology Support Services				
100 Personnel Services – Salaries				
100 Personnel Services – Salaries	69,686.36	88,293.55		157,979.91
Total Personnel Services – Salaries	\$69,686.36	\$88,293.55		\$157,979.91
200 Personnel Services – Employee Benefits				
220 Social Security Contributions	4,958.44	6,329.25		11,287.69
230 PSERS Retirement Contributions	24,048.78	30,470.12		54,518.90
250 Unemployment Compensation	13.48	14.60		28.08
260 Workers' Compensation	446.34	483.54		929.88
270 Group Insurance – Self-Insurance	19,782.29	21,061.49		40,843.78
291 Other Retirement Plans	1,194.33	1,293.86		2,488.19
Total Personnel Services – Employee Benefits	\$50,443.66	\$59,652.86		\$110,096.52
600 Supplies				
610 General Supplies	10,757.65	16,515.62		27,273.27
Total Supplies	\$10,757.65	\$16,515.62		\$27,273.27
Total 2220 Technology Support Services	\$130,887.67	\$164,462.03		\$295,349.70

General Fund (10)

	<u>Elementary</u>	<u>Secondary</u>	<u>Federal</u>	<u>Total</u>
2240 Computer-Assisted Instruction Support Services				
100 Personnel Services – Salaries				
100 Personnel Services – Salaries	817,307.48	854,756.65		1,672,064.13
Total Personnel Services – Salaries	\$817,307.48	\$854,756.65		\$1,672,064.13
200 Personnel Services – Employee Benefits				
220 Social Security Contributions	60,684.67	63,474.44		124,159.11
230 PSERS Retirement Contributions	263,154.84	273,895.85		537,050.69
250 Unemployment Compensation	302.70	323.64		626.34
260 Workers' Compensation	10,017.76	10,709.60		20,727.36
270 Group Insurance – Self-Insurance	227,966.78	237,271.54		465,238.32
291 Other Retirement Plans	2,337.38	2,432.79		4,770.17
Total Personnel Services – Employee Benefits	\$564,464.13	\$588,107.86		\$1,152,571.99
300 Purchased Professional and Technical Services				
340 Technical Services	13,657.17	14,214.60		27,871.77
Total Purchased Professional and Technical Services	\$13,657.17	\$14,214.60		\$27,871.77
400 Purchased Property Services				
430 Repairs and Maintenance Services	20,967.53	34,223.35		55,190.88
Total Purchased Property Services	\$20,967.53	\$34,223.35		\$55,190.88
500 Other Purchased Services				
530 Communications	30,036.76	31,262.76		61,299.52
580 Travel	1,494.75	1,555.76		3,050.51
Total Other Purchased Services	\$31,531.51	\$32,818.52		\$64,350.03
600 Supplies				
610 General Supplies	3,534.56	11,612.80		15,147.36
650 Supplies & Fees – Technology Related	64,047.49	552,618.18		616,665.67
Total Supplies	\$67,582.05	\$564,230.98		\$631,813.03
700 Property				
752 Capital Equipment – Original and Additional	2,578.91			2,578.91
762 Capitalized Equipment - Replacement	84.00			84.00
Total Property	\$2,662.91			\$2,662.91
Total 2240 Computer-Assisted Instruction Support Services	\$1,518,172.78	\$2,088,351.96		\$3,606,524.74

General Fund (10)

	<u>Elementary</u>	<u>Secondary</u>	<u>Federal</u>	<u>Total</u>
2250 School Library Services				
100 Personnel Services – Salaries				
100 Personnel Services – Salaries	1,855,106.47	875,663.38		2,730,769.85
Total Personnel Services – Salaries	\$1,855,106.47	\$875,663.38		\$2,730,769.85
200 Personnel Services – Employee Benefits				
220 Social Security Contributions	135,986.09	64,412.82		200,398.91
230 PSERS Retirement Contributions	647,313.75	302,148.41		949,462.16
250 Unemployment Compensation	418.90	180.18		599.08
260 Workers' Compensation	13,916.84	5,987.52		19,904.36
270 Group Insurance – Self-Insurance	329,450.40	170,589.60		500,040.00
Total Personnel Services – Employee Benefits	\$1,127,085.98	\$543,318.53		\$1,670,404.51
600 Supplies				
610 General Supplies	3,647.14	23,197.98		26,845.12
640 Books and Periodicals	32,844.49	55,650.72		88,495.21
650 Supplies & Fees – Technology Related		17,652.82		17,652.82
Total Supplies	\$36,491.63	\$96,501.52		\$132,993.15
800 Other Objects				
810 Dues and Fees		1,795.00		1,795.00
Total Other Objects		\$1,795.00		\$1,795.00
Total 2250 School Library Services	\$3,018,684.08	\$1,517,278.43		\$4,535,962.51

General Fund (10)

	<u>Elementary</u>	<u>Secondary</u>	<u>Federal</u>	<u>Total</u>
2260 Instruction and Curriculum Development Services				
100 Personnel Services – Salaries				
100 Personnel Services – Salaries	641,113.77	808,827.89	10,665.63	1,460,607.29
Total Personnel Services – Salaries	\$641,113.77	\$808,827.89	\$10,665.63	\$1,460,607.29
200 Personnel Services – Employee Benefits				
220 Social Security Contributions	46,794.55	59,158.26	780.35	106,733.16
230 PSERS Retirement Contributions	221,087.94	279,191.51	3,680.63	503,960.08
250 Unemployment Compensation	114.25	117.06		231.31
260 Workers' Compensation	3,793.35	3,884.77		7,678.12
270 Group Insurance – Self-Insurance	130,656.39	133,763.27		264,419.66
291 Other Retirement Plans	6,536.67	7,081.40		13,618.07
Total Personnel Services – Employee Benefits	\$408,983.15	\$483,196.27	\$4,460.98	\$896,640.40
300 Purchased Professional and Technical Services				
329 Professional Educational Services – Other	9,109.50	3,291.54		12,401.04
Total Purchased Professional and Technical Services	\$9,109.50	\$3,291.54		\$12,401.04
500 Other Purchased Services				
580 Travel	1,340.39			1,340.39
Total Other Purchased Services	\$1,340.39			\$1,340.39
600 Supplies				
610 General Supplies	117.21			117.21
630 Food	20.97	69.00		89.97
650 Supplies & Fees – Technology Related		6,687.00		6,687.00
Total Supplies	\$138.18	\$6,756.00		\$6,894.18
800 Other Objects				
810 Dues and Fees	353.94			353.94
Total Other Objects	\$353.94			\$353.94
Total 2260 Instruction and Curriculum Development Services	\$1,061,038.93	\$1,302,071.70	\$15,126.61	\$2,378,237.24

General Fund (10)

2270 Instructional Staff Professional Development Services	<u>Elementary</u>	<u>Secondary</u>	<u>Federal</u>	<u>Total</u>
100 Personnel Services – Salaries				
100 Personnel Services – Salaries	388,200.65	404,564.35		792,765.00
Total Personnel Services – Salaries	\$388,200.65	\$404,564.35		\$792,765.00
200 Personnel Services – Employee Benefits				
220 Social Security Contributions	28,720.05	29,931.98		58,652.03
230 PSERS Retirement Contributions	133,672.12	139,307.15		272,979.27
240 Tuition Reimbursement	101,755.61	105,908.90		207,664.51
250 Unemployment Compensation	56.18	58.48		114.66
260 Workers' Compensation	1,867.02	1,943.22		3,810.24
270 Group Insurance – Self-Insurance	38,274.92	39,837.16		78,112.08
Total Personnel Services – Employee Benefits	\$304,345.90	\$316,986.89		\$621,332.79
300 Purchased Professional and Technical Services				
329 Professional Educational Services – Other	7,779.25	5,520.75		13,300.00
330 Other Professional Services		1,450.00		1,450.00
340 Technical Services	5,880.00	6,120.00		12,000.00
360 Employee Training and Development Services	26,175.55	3,704.63	4,304.00	34,184.18
Total Purchased Professional and Technical Services	\$39,834.80	\$16,795.38	\$4,304.00	\$60,934.18
400 Purchased Property Services				
430 Repairs and Maintenance Services	90.90	94.61		185.51
Total Purchased Property Services	\$90.90	\$94.61		\$185.51
500 Other Purchased Services				
580 Travel	1,746.43	2,488.20	30,191.56	34,426.19
Total Other Purchased Services	\$1,746.43	\$2,488.20	\$30,191.56	\$34,426.19
600 Supplies				
610 General Supplies	298.76	310.95		609.71
630 Food	42.88	44.64		87.52
640 Books and Periodicals	911.47	948.68		1,860.15
Total Supplies	\$1,253.11	\$1,304.27		\$2,557.38
800 Other Objects				
810 Dues and Fees	106.33	110.67		217.00
Total Other Objects	\$106.33	\$110.67		\$217.00
Total 2270 Instructional Staff Professional Development Services	\$735,578.12	\$742,344.37	\$34,495.56	\$1,512,418.05

LEA : 122092102 Central Bucks SD

Printed 12/1/2021 8:41:55 AM

General Fund (10)

2280 Nonpublic Support Services

600 Supplies

610 General Supplies

Total Supplies

Total 2280 Nonpublic Support Services

Elementary

Secondary

Federal

Total

160.00

160.00

\$160.00

\$160.00

\$160.00

\$160.00

General Fund (10)

	<u>Elementary</u>	<u>Secondary</u>	<u>Federal</u>	<u>Total</u>
2290 Other Instructional Staff Services				
100 Personnel Services – Salaries				
100 Personnel Services – Salaries	454,402.27	472,949.30		927,351.57
Total Personnel Services – Salaries	\$454,402.27	\$472,949.30		\$927,351.57
200 Personnel Services – Employee Benefits				
220 Social Security Contributions	33,549.45	34,918.81		68,468.26
230 PSERS Retirement Contributions	156,698.50	163,094.35		319,792.85
250 Unemployment Compensation	83.70	87.12		170.82
260 Workers' Compensation	2,771.95	2,885.09		5,657.04
270 Group Insurance – Self-Insurance	93,142.02	96,943.74		190,085.76
291 Other Retirement Plans	7,807.56	8,126.24		15,933.80
Total Personnel Services – Employee Benefits	\$294,053.18	\$306,055.35		\$600,108.53
Total 2290 Other Instructional Staff Services	\$748,455.45	\$779,004.65		\$1,527,460.10

General Fund (10)

	<u>Elementary</u>	<u>Secondary</u>	<u>Federal</u>	<u>Total</u>
2300 Support Services – Administration				
100 Personnel Services – Salaries				
100 Personnel Services – Salaries	3,690,962.48	4,048,616.33		8,634,083.50
Total Personnel Services – Salaries	\$3,690,962.48	\$4,048,616.33		\$8,634,083.50
200 Personnel Services – Employee Benefits				
220 Social Security Contributions	267,422.25	274,924.31		615,533.97
230 PSERS Retirement Contributions	1,271,379.71	1,313,143.56		2,899,190.00
250 Unemployment Compensation	742.56	687.96		1,577.16
260 Workers' Compensation	24,593.22	22,761.00		52,209.90
270 Group Insurance – Self-Insurance	727,521.96	710,192.16		1,537,611.97
291 Other Retirement Plans	56,148.66	62,090.53		137,890.94
Total Personnel Services – Employee Benefits	\$2,347,808.36	\$2,383,799.52		\$5,244,013.94
300 Purchased Professional and Technical Services				
310 Official / Administrative Services				785,630.24
330 Other Professional Services		4,299.00		537,839.55
340 Technical Services				28,442.14
Total Purchased Professional and Technical Services		\$4,299.00		\$1,351,911.93
400 Purchased Property Services				
430 Repairs and Maintenance Services				3,971.09
440 Rentals				8,804.51
Total Purchased Property Services				\$12,775.60
500 Other Purchased Services				
520 Insurance – General				5,400.00
530 Communications	1,213.74	11,417.73		32,457.70
549 Other Advertising/Public Relations				5,859.04
550 Printing and Binding				1,545.00
580 Travel	71.57	4,277.94		5,272.51
Total Other Purchased Services	\$1,285.31	\$15,695.67		\$50,534.25
600 Supplies				
610 General Supplies	17,980.99	90,740.47		158,529.00
630 Food	1,166.76	6,594.04		13,248.04
640 Books and Periodicals		246.51		953.96
Total Supplies	\$19,147.75	\$97,581.02		\$172,731.00
700 Property				
752 Capital Equipment – Original and Additional	331.67			331.67
762 Capitalized Equipment - Replacement		10,999.00		10,999.00
Total Property	\$331.67	\$10,999.00		\$11,330.67
800 Other Objects				
810 Dues and Fees	9,988.01	8,469.99		157,198.57
Total Other Objects	\$9,988.01	\$8,469.99		\$157,198.57
Total 2300 Support Services – Administration	\$6,069,523.58	\$6,569,460.53		\$15,634,579.46

General Fund (10)

2310 Board Services

Elementary

Secondary

Federal

Total

100 Personnel Services – Salaries

100 Personnel Services – Salaries

(227,163.42)

Total Personnel Services – Salaries

(\$227,163.42)

200 Personnel Services – Employee Benefits

270 Group Insurance – Self-Insurance

10,682.85

Total Personnel Services – Employee Benefits

\$10,682.85

500 Other Purchased Services

520 Insurance – General

5,400.00

549 Other Advertising/Public Relations

2,637.48

Total Other Purchased Services

\$8,037.48

800 Other Objects

810 Dues and Fees

16,604.57

Total Other Objects

\$16,604.57

Total 2310 Board Services

(\$191,838.52)

General Fund (10)

	<u>Elementary</u>	<u>Secondary</u>	<u>Federal</u>	<u>Total</u>
2330 Tax Assessment and Collection Services				
100 Personnel Services – Salaries				
100 Personnel Services – Salaries				161,101.50
Total Personnel Services – Salaries				\$161,101.50
200 Personnel Services – Employee Benefits				
220 Social Security Contributions				12,324.27
Total Personnel Services – Employee Benefits				\$12,324.27
300 Purchased Professional and Technical Services				
310 Official / Administrative Services				785,630.24
Total Purchased Professional and Technical Services				\$785,630.24
500 Other Purchased Services				
530 Communications				6,764.24
Total Other Purchased Services				\$6,764.24
600 Supplies				
610 General Supplies				2,545.75
Total Supplies				\$2,545.75
Total 2330 Tax Assessment and Collection Services				\$968,366.00

General Fund (10)

	<u>Elementary</u>	<u>Secondary</u>	<u>Federal</u>	<u>Total</u>
2340 Staff Relations and Negotiations Services				
100 Personnel Services – Salaries				
100 Personnel Services – Salaries				133.00
Total Personnel Services – Salaries				\$133.00
200 Personnel Services – Employee Benefits				
220 Social Security Contributions				9.97
Total Personnel Services – Employee Benefits				\$9.97
300 Purchased Professional and Technical Services				
330 Other Professional Services				163,631.10
Total Purchased Professional and Technical Services				\$163,631.10
400 Purchased Property Services				
430 Repairs and Maintenance Services				365.80
Total Purchased Property Services				\$365.80
500 Other Purchased Services				
549 Other Advertising/Public Relations				2,594.24
Total Other Purchased Services				\$2,594.24
600 Supplies				
630 Food				93.50
Total Supplies				\$93.50
Total 2340 Staff Relations and Negotiations Services				\$166,827.61

General Fund (10)

2350 Legal and Accounting Services

Elementary

Secondary

Federal

Total

300 Purchased Professional and Technical Services

330 Other Professional Services

230,235.25

Total Purchased Professional and Technical Services

\$230,235.25

Total 2350 Legal and Accounting Services

\$230,235.25

General Fund (10)

2360 Office of the Superintendent / Executive Director Services

Elementary

Secondary

Federal

Total

100 Personnel Services – Salaries

100 Personnel Services – Salaries

841,920.85

Total Personnel Services – Salaries

\$841,920.85

200 Personnel Services – Employee Benefits

220 Social Security Contributions

52,010.46

230 PSERS Retirement Contributions

276,589.78

250 Unemployment Compensation

113.10

260 Workers' Compensation

3,743.28

270 Group Insurance – Self-Insurance

67,894.84

291 Other Retirement Plans

17,440.96

Total Personnel Services – Employee Benefits

\$417,792.42

300 Purchased Professional and Technical Services

330 Other Professional Services

75,000.00

Total Purchased Professional and Technical Services

\$75,000.00

500 Other Purchased Services

580 Travel

498.00

Total Other Purchased Services

\$498.00

600 Supplies

610 General Supplies

12,500.83

630 Food

958.20

640 Books and Periodicals

148.25

Total Supplies

\$13,607.28

800 Other Objects

810 Dues and Fees

3,696.00

Total Other Objects

\$3,696.00

Total 2360 Office of the Superintendent / Executive Director Services

\$1,352,514.55

General Fund (10)

	<u>Elementary</u>	<u>Secondary</u>	<u>Federal</u>	<u>Total</u>
2370 Community Relations Services				
100 Personnel Services – Salaries				
100 Personnel Services – Salaries				110,335.92
Total Personnel Services – Salaries				\$110,335.92
200 Personnel Services – Employee Benefits				
220 Social Security Contributions				8,217.17
230 PSERS Retirement Contributions				38,076.95
250 Unemployment Compensation				18.72
260 Workers' Compensation				619.92
270 Group Insurance – Self-Insurance				21,320.16
291 Other Retirement Plans				2,210.79
Total Personnel Services – Employee Benefits				\$70,463.71
300 Purchased Professional and Technical Services				
330 Other Professional Services				14,800.00
340 Technical Services				28,442.14
Total Purchased Professional and Technical Services				\$43,242.14
400 Purchased Property Services				
430 Repairs and Maintenance Services				3,128.46
Total Purchased Property Services				\$3,128.46
500 Other Purchased Services				
550 Printing and Binding				1,545.00
Total Other Purchased Services				\$1,545.00
600 Supplies				
610 General Supplies				32,285.75
Total Supplies				\$32,285.75
800 Other Objects				
810 Dues and Fees				615.00
Total Other Objects				\$615.00
Total 2370 Community Relations Services				\$261,615.98

General Fund (10)

	<u>Elementary</u>	<u>Secondary</u>	<u>Federal</u>	<u>Total</u>
2380 Office of the Principal Services				
100 Personnel Services – Salaries				
100 Personnel Services – Salaries	3,690,962.48	4,048,616.33		7,739,578.81
Total Personnel Services – Salaries	\$3,690,962.48	\$4,048,616.33		\$7,739,578.81
200 Personnel Services – Employee Benefits				
220 Social Security Contributions	267,422.25	274,924.31		542,346.56
230 PSERS Retirement Contributions	1,271,379.71	1,313,143.56		2,584,523.27
250 Unemployment Compensation	742.56	687.96		1,430.52
260 Workers' Compensation	24,593.22	22,761.00		47,354.22
270 Group Insurance – Self-Insurance	727,521.96	710,192.16		1,437,714.12
291 Other Retirement Plans	56,148.66	62,090.53		118,239.19
Total Personnel Services – Employee Benefits	\$2,347,808.36	\$2,383,799.52		\$4,731,607.88
300 Purchased Professional and Technical Services				
330 Other Professional Services		4,299.00		4,299.00
Total Purchased Professional and Technical Services		\$4,299.00		\$4,299.00
500 Other Purchased Services				
530 Communications	1,213.74	11,417.73		12,631.47
580 Travel	71.57	4,277.94		4,349.51
Total Other Purchased Services	\$1,285.31	\$15,695.67		\$16,980.98
600 Supplies				
610 General Supplies	17,980.99	90,740.47		108,721.46
630 Food	1,166.76	6,594.04		7,760.80
640 Books and Periodicals		246.51		246.51
Total Supplies	\$19,147.75	\$97,581.02		\$116,728.77
700 Property				
752 Capital Equipment – Original and Additional	331.67			331.67
762 Capitalized Equipment - Replacement		10,999.00		10,999.00
Total Property	\$331.67	\$10,999.00		\$11,330.67
800 Other Objects				
810 Dues and Fees	9,988.01	8,469.99		18,458.00
Total Other Objects	\$9,988.01	\$8,469.99		\$18,458.00
Total 2380 Office of the Principal Services	\$6,069,523.58	\$6,569,460.53		\$12,638,984.11

General Fund (10)

	<u>Elementary</u>	<u>Secondary</u>	<u>Federal</u>	<u>Total</u>
2390 Other Administration Services				
100 Personnel Services – Salaries				
100 Personnel Services – Salaries				8,176.84
Total Personnel Services – Salaries				\$8,176.84
200 Personnel Services – Employee Benefits				
220 Social Security Contributions				625.54
250 Unemployment Compensation				14.82
260 Workers’ Compensation				492.48
Total Personnel Services – Employee Benefits				\$1,132.84
300 Purchased Professional and Technical Services				
330 Other Professional Services				49,874.20
Total Purchased Professional and Technical Services				\$49,874.20
400 Purchased Property Services				
430 Repairs and Maintenance Services				476.83
440 Rentals				8,804.51
Total Purchased Property Services				\$9,281.34
500 Other Purchased Services				
530 Communications				13,061.99
549 Other Advertising/Public Relations				627.32
580 Travel				425.00
Total Other Purchased Services				\$14,114.31
600 Supplies				
610 General Supplies				2,475.21
630 Food				4,435.54
640 Books and Periodicals				559.20
Total Supplies				\$7,469.95
800 Other Objects				
810 Dues and Fees				117,825.00
Total Other Objects				\$117,825.00
Total 2390 Other Administration Services				\$207,874.48

General Fund (10)

	<u>Elementary</u>	<u>Secondary</u>	<u>Federal</u>	<u>Total</u>
2400 Support Services – Pupil Health				
100 Personnel Services – Salaries				
100 Personnel Services – Salaries				2,498,293.57
Total Personnel Services – Salaries				\$2,498,293.57
200 Personnel Services – Employee Benefits				
220 Social Security Contributions				179,586.62
230 PSERS Retirement Contributions				849,444.93
250 Unemployment Compensation				837.00
260 Workers' Compensation				27,800.98
270 Group Insurance – Self-Insurance				574,381.76
Total Personnel Services – Employee Benefits				\$1,632,051.29
300 Purchased Professional and Technical Services				
329 Professional Educational Services – Other				148.00
330 Other Professional Services				58,726.30
Total Purchased Professional and Technical Services				\$58,874.30
500 Other Purchased Services				
580 Travel				243.86
Total Other Purchased Services				\$243.86
600 Supplies				
610 General Supplies				57,107.63
Total Supplies				\$57,107.63
700 Property				
752 Capital Equipment – Original and Additional				339.15
762 Capitalized Equipment - Replacement				278.50
Total Property				\$617.65
800 Other Objects				
810 Dues and Fees				2,045.00
Total Other Objects				\$2,045.00
Total 2400 Support Services – Pupil Health				\$4,249,233.30

General Fund (10)

2440 Nursing Services

	<u>Elementary</u>	<u>Secondary</u>	<u>Federal</u>	<u>Total</u>
100 Personnel Services – Salaries				
100 Personnel Services – Salaries				2,433,347.74
Total Personnel Services – Salaries				\$2,433,347.74
200 Personnel Services – Employee Benefits				
220 Social Security Contributions				174,891.60
230 PSERS Retirement Contributions				827,070.98
250 Unemployment Compensation				822.12
260 Workers' Compensation				27,319.14
270 Group Insurance – Self-Insurance				561,990.84
Total Personnel Services – Employee Benefits				\$1,592,094.68
300 Purchased Professional and Technical Services				
329 Professional Educational Services – Other				148.00
330 Other Professional Services				58,726.30
Total Purchased Professional and Technical Services				\$58,874.30
500 Other Purchased Services				
580 Travel				243.86
Total Other Purchased Services				\$243.86
600 Supplies				
610 General Supplies				57,107.63
Total Supplies				\$57,107.63
700 Property				
752 Capital Equipment – Original and Additional				339.15
762 Capitalized Equipment - Replacement				278.50
Total Property				\$617.65
800 Other Objects				
810 Dues and Fees				2,045.00
Total Other Objects				\$2,045.00
Total 2440 Nursing Services				\$4,144,330.86

General Fund (10)

	<u>Elementary</u>	<u>Secondary</u>	<u>Federal</u>	<u>Total</u>
2450 Nonpublic Health Services				
100 Personnel Services – Salaries				
100 Personnel Services – Salaries				64,945.83
Total Personnel Services – Salaries				\$64,945.83
200 Personnel Services – Employee Benefits				
220 Social Security Contributions				4,695.02
230 PSERS Retirement Contributions				22,373.95
250 Unemployment Compensation				14.88
260 Workers' Compensation				481.84
270 Group Insurance – Self-Insurance				12,390.92
Total Personnel Services – Employee Benefits				\$39,956.61
Total 2450 Nonpublic Health Services				\$104,902.44

General Fund (10)

	<u>Elementary</u>	<u>Secondary</u>	<u>Federal</u>	<u>Total</u>
2500 Support Services – Business				
100 Personnel Services – Salaries				
100 Personnel Services – Salaries				1,005,903.62
Total Personnel Services – Salaries				\$1,005,903.62
200 Personnel Services – Employee Benefits				
220 Social Security Contributions				72,130.64
230 PSERS Retirement Contributions				341,257.74
250 Unemployment Compensation				227.40
260 Workers' Compensation				7,531.52
270 Group Insurance – Self-Insurance				209,159.76
291 Other Retirement Plans				12,820.45
Total Personnel Services – Employee Benefits				\$643,127.51
300 Purchased Professional and Technical Services				
330 Other Professional Services				64,444.99
Total Purchased Professional and Technical Services				\$64,444.99
400 Purchased Property Services				
430 Repairs and Maintenance Services				2,213.00
440 Rentals				(29.72)
Total Purchased Property Services				\$2,183.28
500 Other Purchased Services				
530 Communications				2,498.58
541 Advertising Related to Federal Grant Awards				8,073.10
580 Travel				(351.42)
Total Other Purchased Services				\$10,220.26
600 Supplies				
610 General Supplies				22,030.86
630 Food				1,931.32
Total Supplies				\$23,962.18
800 Other Objects				
810 Dues and Fees				2,626.22
Total Other Objects				\$2,626.22
Total 2500 Support Services – Business				\$1,752,468.06

General Fund (10)

2510 Fiscal Services

Elementary

Secondary

Federal

Total

100 Personnel Services – Salaries

100 Personnel Services – Salaries 1,005,903.62

Total Personnel Services – Salaries \$1,005,903.62

200 Personnel Services – Employee Benefits

220 Social Security Contributions 72,130.64

230 PSERS Retirement Contributions 341,257.74

250 Unemployment Compensation 227.40

260 Workers' Compensation 7,531.52

270 Group Insurance – Self-Insurance 209,159.76

291 Other Retirement Plans 12,820.45

Total Personnel Services – Employee Benefits \$643,127.51

300 Purchased Professional and Technical Services

330 Other Professional Services 64,444.99

Total Purchased Professional and Technical Services \$64,444.99

400 Purchased Property Services

430 Repairs and Maintenance Services 2,213.00

440 Rentals (29.72)

Total Purchased Property Services \$2,183.28

500 Other Purchased Services

530 Communications 2,498.58

541 Advertising Related to Federal Grant Awards 8,073.10

580 Travel (351.42)

Total Other Purchased Services \$10,220.26

600 Supplies

610 General Supplies 22,030.86

630 Food 1,931.32

Total Supplies \$23,962.18

800 Other Objects

810 Dues and Fees 2,626.22

Total Other Objects \$2,626.22

Total 2510 Fiscal Services \$1,752,468.06

General Fund (10)

2511 Supervision of Fiscal Services - Head of Component

Elementary

Secondary

Federal

Total

100 Personnel Services – Salaries

100 Personnel Services – Salaries

176,721.85

Total Personnel Services – Salaries

\$176,721.85

200 Personnel Services – Employee Benefits

220 Social Security Contributions

11,117.37

230 PSERS Retirement Contributions

59,840.40

250 Unemployment Compensation

18.72

260 Workers' Compensation

619.92

270 Group Insurance – Self-Insurance

21,320.16

291 Other Retirement Plans

4,869.10

Total Personnel Services – Employee Benefits

\$97,785.67

Total 2511 Supervision of Fiscal Services - Head of Component

\$274,507.52

General Fund (10)

	<u>Elementary</u>	<u>Secondary</u>	<u>Federal</u>	<u>Total</u>
2515 Financial Accounting Services				
100 Personnel Services – Salaries				
100 Personnel Services – Salaries				829,181.77
Total Personnel Services – Salaries				\$829,181.77
200 Personnel Services – Employee Benefits				
220 Social Security Contributions				61,013.27
230 PSERS Retirement Contributions				281,417.34
250 Unemployment Compensation				208.68
260 Workers' Compensation				6,911.60
270 Group Insurance – Self-Insurance				187,839.60
291 Other Retirement Plans				7,951.35
Total Personnel Services – Employee Benefits				\$545,341.84
300 Purchased Professional and Technical Services				
330 Other Professional Services				64,444.99
Total Purchased Professional and Technical Services				\$64,444.99
400 Purchased Property Services				
430 Repairs and Maintenance Services				2,213.00
440 Rentals				(29.72)
Total Purchased Property Services				\$2,183.28
500 Other Purchased Services				
530 Communications				2,498.58
541 Advertising Related to Federal Grant Awards				8,073.10
580 Travel				(351.42)
Total Other Purchased Services				\$10,220.26
600 Supplies				
610 General Supplies				22,030.86
630 Food				1,931.32
Total Supplies				\$23,962.18
800 Other Objects				
810 Dues and Fees				2,626.22
Total Other Objects				\$2,626.22
Total 2515 Financial Accounting Services				\$1,477,960.54

General Fund (10)

2600 Operation and Maintenance of Plant Services

Elementary Secondary Federal Total

100	<u>Personnel Services – Salaries</u>			
100	Personnel Services – Salaries			10,691,228.52
Total Personnel Services – Salaries				\$10,691,228.52
200	<u>Personnel Services – Employee Benefits</u>			
220	Social Security Contributions			805,281.99
230	PSERS Retirement Contributions			3,688,834.70
250	Unemployment Compensation			78,592.37
260	Workers' Compensation			66,606.69
270	Group Insurance – Self-Insurance			2,926,127.97
291	Other Retirement Plans			10,265.63
Total Personnel Services – Employee Benefits				\$7,575,709.35
300	<u>Purchased Professional and Technical Services</u>			
330	Other Professional Services			25,134.11
340	Technical Services			199,458.00
Total Purchased Professional and Technical Services				\$224,592.11
400	<u>Purchased Property Services</u>			
410	Cleaning Services			648,928.23
420	Utility Services			359,809.45
430	Repairs and Maintenance Services			1,390,619.50
440	Rentals			8,772.61
460	Extermination Services			33,619.07
490	Other Purchased Property Services			305,989.41
Total Purchased Property Services				\$2,747,738.27
500	<u>Other Purchased Services</u>			
521	Fire Insurance			594,969.00
523	General Property and Liability Insurance			231,744.00
529	Other Insurance			44,113.00
530	Communications			55.00
580	Travel			4,931.06
Total Other Purchased Services				\$875,812.06
600	<u>Supplies</u>			
610	General Supplies	814,055.01	812,072.19	1,626,127.20
620	Energy			2,958,030.22
630	Food			207.30
650	Supplies & Fees – Technology Related			35,756.84
Total Supplies		\$814,055.01	\$812,072.19	\$4,620,121.56
700	<u>Property</u>			
752	Capital Equipment – Original and Additional			55,000.00
762	Capitalized Equipment - Replacement			47,251.98
Total Property				\$102,251.98
800	<u>Other Objects</u>			

General Fund (10)

	<u>Elementary</u>	<u>Secondary</u>	<u>Federal</u>	<u>Total</u>
2600 Operation and Maintenance of Plant Services				
800 Other Objects				
810 Dues and Fees				3,856.29
Total Other Objects				\$3,856.29
Total 2600 Operation and Maintenance of Plant Services	\$814,055.01	\$812,072.19		\$26,841,310.14

General Fund (10)

	<u>Elementary</u>	<u>Secondary</u>	<u>Federal</u>	<u>Total</u>
2610 Supervision of Operation and Maintenance of Plant Services				
100 Personnel Services – Salaries				
100 Personnel Services – Salaries				157,476.96
Total Personnel Services – Salaries				\$157,476.96
200 Personnel Services – Employee Benefits				
220 Social Security Contributions				11,025.74
230 PSERS Retirement Contributions				54,345.34
250 Unemployment Compensation				18.72
260 Workers' Compensation				619.92
291 Other Retirement Plans				3,161.38
Total Personnel Services – Employee Benefits				\$69,171.10
Total 2610 Supervision of Operation and Maintenance of Plant Services				\$226,648.06

General Fund (10)

2611 Supervision of Operation and Maintenance of Plant Services – Head of Component

Elementary

Secondary

Federal

Total

100 Personnel Services – Salaries

100 Personnel Services – Salaries

157,476.96

Total Personnel Services – Salaries

\$157,476.96

200 Personnel Services – Employee Benefits

220 Social Security Contributions

11,025.74

230 PSERS Retirement Contributions

54,345.34

250 Unemployment Compensation

18.72

260 Workers' Compensation

619.92

291 Other Retirement Plans

3,161.38

Total Personnel Services – Employee Benefits

\$69,171.10

Total 2611 Supervision of Operation and Maintenance of Plant Services – Head of Component

\$226,648.06

General Fund (10)

	<u>Elementary</u>	<u>Secondary</u>	<u>Federal</u>	<u>Total</u>
2620 Operation of Buildings Services				
100 Personnel Services – Salaries				
100 Personnel Services – Salaries				10,533,751.56
Total Personnel Services – Salaries				\$10,533,751.56
200 Personnel Services – Employee Benefits				
220 Social Security Contributions				794,256.25
230 PSERS Retirement Contributions				3,634,489.36
250 Unemployment Compensation				78,573.65
260 Workers' Compensation				65,986.77
270 Group Insurance – Self-Insurance				2,926,127.97
291 Other Retirement Plans				7,104.25
Total Personnel Services – Employee Benefits				\$7,506,538.25
300 Purchased Professional and Technical Services				
330 Other Professional Services				25,134.11
340 Technical Services				199,458.00
Total Purchased Professional and Technical Services				\$224,592.11
400 Purchased Property Services				
410 Cleaning Services				648,928.23
420 Utility Services				359,809.45
430 Repairs and Maintenance Services				1,390,619.50
440 Rentals				8,772.61
460 Extermination Services				33,619.07
490 Other Purchased Property Services				305,989.41
Total Purchased Property Services				\$2,747,738.27
500 Other Purchased Services				
521 Fire Insurance				594,969.00
523 General Property and Liability Insurance				231,744.00
529 Other Insurance				44,113.00
530 Communications				55.00
580 Travel				4,931.06
Total Other Purchased Services				\$875,812.06
600 Supplies				
610 General Supplies	814,055.01	812,072.19		1,626,127.20
620 Energy				2,958,030.22
630 Food				207.30
650 Supplies & Fees – Technology Related				35,756.84
Total Supplies				\$4,620,121.56
700 Property				
752 Capital Equipment – Original and Additional				55,000.00
762 Capitalized Equipment - Replacement				47,251.98
Total Property				\$102,251.98
800 Other Objects				

LEA : 122092102 Central Bucks SD

Printed 12/1/2021 8:41:55 AM

General Fund (10)

	<u>Elementary</u>	<u>Secondary</u>	<u>Federal</u>	<u>Total</u>
2620 Operation of Buildings Services				
800 Other Objects				
810 Dues and Fees				3,856.29
Total Other Objects				\$3,856.29
Total 2620 Operation of Buildings Services	\$814,055.01	\$812,072.19		\$26,614,662.08

General Fund (10)

	<u>Elementary</u>	<u>Secondary</u>	<u>Federal</u>	<u>Total</u>
2700 Student Transportation Services				
100 Personnel Services – Salaries				
100 Personnel Services – Salaries				5,379,668.22
Total Personnel Services – Salaries				\$5,379,668.22
200 Personnel Services – Employee Benefits				
220 Social Security Contributions				386,314.53
230 PSERS Retirement Contributions				1,806,169.32
250 Unemployment Compensation				2,960.10
260 Workers' Compensation				98,234.64
270 Group Insurance – Self-Insurance				2,243,658.76
291 Other Retirement Plans				4,058.63
Total Personnel Services – Employee Benefits				\$4,541,395.98
300 Purchased Professional and Technical Services				
330 Other Professional Services				7,330.51
Total Purchased Professional and Technical Services				\$7,330.51
400 Purchased Property Services				
410 Cleaning Services				387.96
420 Utility Services				11,067.62
430 Repairs and Maintenance Services				69,556.21
440 Rentals				1,835.62
Total Purchased Property Services				\$82,847.41
500 Other Purchased Services				
511 Student Transportation Services from Another LEA Within the State				189,076.47
513 Contracted Carriers				6,739,611.61
515 Public Carriers				111,050.00
516 Student Transportation Services From the IU				1,048,901.08
522 Automotive Liability Insurance				198,580.06
530 Communications				71,910.32
Total Other Purchased Services				\$8,359,129.54
600 Supplies				
610 General Supplies				246,832.40
620 Energy				478,820.06
630 Food				830.40
650 Supplies & Fees – Technology Related				98,716.46
Total Supplies				\$825,199.32
800 Other Objects				
810 Dues and Fees				786.14
Total Other Objects				\$786.14
Total 2700 Student Transportation Services				\$19,196,357.12

General Fund (10)

2710 Supervision of Student Transportation Services

Elementary

Secondary

Federal

Total

100 Personnel Services – Salaries

100 Personnel Services – Salaries

111,395.00

Total Personnel Services – Salaries

\$111,395.00

200 Personnel Services – Employee Benefits

220 Social Security Contributions

8,092.75

230 PSERS Retirement Contributions

38,442.46

250 Unemployment Compensation

18.72

260 Workers' Compensation

619.92

270 Group Insurance – Self-Insurance

21,320.16

291 Other Retirement Plans

2,234.03

Total Personnel Services – Employee Benefits

\$70,728.04

Total 2710 Supervision of Student Transportation Services

\$182,123.04

General Fund (10)

2711 Supervision of Student Transportation Services – Head of Component

Elementary

Secondary

Federal

Total

100 Personnel Services – Salaries

100 Personnel Services – Salaries

111,395.00

Total Personnel Services – Salaries

\$111,395.00

200 Personnel Services – Employee Benefits

220 Social Security Contributions

8,092.75

230 PSERS Retirement Contributions

38,442.46

250 Unemployment Compensation

18.72

260 Workers' Compensation

619.92

270 Group Insurance – Self-Insurance

21,320.16

291 Other Retirement Plans

2,234.03

Total Personnel Services – Employee Benefits

\$70,728.04

Total 2711 Supervision of Student Transportation Services – Head of Component

\$182,123.04

General Fund (10)

2720 Vehicle Operation Services

Elementary Secondary Federal Total

100 Personnel Services – Salaries
100 Personnel Services – Salaries 4,741,445.90

Total Personnel Services – Salaries \$4,741,445.90

200 Personnel Services – Employee Benefits

220 Social Security Contributions 340,399.60
230 PSERS Retirement Contributions 1,590,954.17
250 Unemployment Compensation 2,647.24
260 Workers' Compensation 87,853.25
270 Group Insurance – Self-Insurance 2,000,837.12
291 Other Retirement Plans 1,642.14

Total Personnel Services – Employee Benefits \$4,024,333.52

300 Purchased Professional and Technical Services

330 Other Professional Services 6,597.46

Total Purchased Professional and Technical Services \$6,597.46

400 Purchased Property Services

410 Cleaning Services 349.16
420 Utility Services 9,960.86
430 Repairs and Maintenance Services 62,600.59
440 Rentals 1,652.06

Total Purchased Property Services \$74,562.67

500 Other Purchased Services

511 Student Transportation Services from Another LEA Within the State 170,168.82
513 Contracted Carriers 6,065,650.45
515 Public Carriers 99,945.00
516 Student Transportation Services From the IU 944,010.97
522 Automotive Liability Insurance 178,722.05
530 Communications 64,719.29

Total Other Purchased Services \$7,523,216.58

600 Supplies

610 General Supplies 222,149.16
620 Energy 430,938.05
630 Food 747.36
650 Supplies & Fees – Technology Related 88,844.81

Total Supplies \$742,679.38

800 Other Objects

810 Dues and Fees 707.53

Total Other Objects \$707.53

Total 2720 Vehicle Operation Services \$17,113,543.04

General Fund (10)

2750 Nonpublic Transportation

Elementary Secondary Federal Total

100 Personnel Services – Salaries
100 Personnel Services – Salaries 526,827.32

Total Personnel Services – Salaries \$526,827.32

200 Personnel Services – Employee Benefits

220 Social Security Contributions 37,822.18
230 PSERS Retirement Contributions 176,772.69
250 Unemployment Compensation 294.14
260 Workers' Compensation 9,761.47
270 Group Insurance – Self-Insurance 221,501.48
291 Other Retirement Plans 182.46

Total Personnel Services – Employee Benefits \$446,334.42

300 Purchased Professional and Technical Services

330 Other Professional Services 733.05

Total Purchased Professional and Technical Services \$733.05

400 Purchased Property Services

410 Cleaning Services 38.80
420 Utility Services 1,106.76
430 Repairs and Maintenance Services 6,955.62
440 Rentals 183.56

Total Purchased Property Services \$8,284.74

500 Other Purchased Services

511 Student Transportation Services from Another LEA Within the State 18,907.65
513 Contracted Carriers 673,961.16
515 Public Carriers 11,105.00
516 Student Transportation Services From the IU 104,890.11
522 Automotive Liability Insurance 19,858.01
530 Communications 7,191.03

Total Other Purchased Services \$835,912.96

600 Supplies

610 General Supplies 24,683.24
620 Energy 47,882.01
630 Food 83.04
650 Supplies & Fees – Technology Related 9,871.65

Total Supplies \$82,519.94

800 Other Objects

810 Dues and Fees 78.61

Total Other Objects \$78.61

Total 2750 Nonpublic Transportation \$1,900,691.04

General Fund (10)

	<u>Elementary</u>	<u>Secondary</u>	<u>Federal</u>	<u>Total</u>
2800 Support Services – Central				
100 Personnel Services – Salaries				
100 Personnel Services – Salaries			21,629.15	1,401,449.01
Total Personnel Services – Salaries			\$21,629.15	\$1,401,449.01
200 Personnel Services – Employee Benefits				
220 Social Security Contributions			1,606.61	99,907.43
230 PSERS Retirement Contributions			7,464.19	478,789.11
240 Tuition Reimbursement				7,407.48
250 Unemployment Compensation			5.76	343.50
260 Workers' Compensation			185.88	11,369.28
270 Group Insurance – Self-Insurance			6,396.20	306,480.50
291 Other Retirement Plans			261.87	14,209.18
Total Personnel Services – Employee Benefits			\$15,920.51	\$918,506.48
300 Purchased Professional and Technical Services				
330 Other Professional Services				133,216.47
340 Technical Services				150,353.92
350 Security / Safety Services				28,658.90
360 Employee Training and Development Services				6,342.10
Total Purchased Professional and Technical Services				\$318,571.39
400 Purchased Property Services				
430 Repairs and Maintenance Services				1,104,963.77
440 Rentals				(152,068.53)
Total Purchased Property Services				\$952,895.24
500 Other Purchased Services				
530 Communications				536,037.22
549 Other Advertising/Public Relations				16,084.16
580 Travel				1,557.60
Total Other Purchased Services				\$553,678.98
600 Supplies				
610 General Supplies				66,425.20
630 Food				683.75
640 Books and Periodicals				3,754.85
650 Supplies & Fees – Technology Related				101,191.38
Total Supplies				\$172,055.18
800 Other Objects				
810 Dues and Fees				3,004.96
Total Other Objects				\$3,004.96
Total 2800 Support Services – Central			\$37,549.66	\$4,320,161.24

General Fund (10)

2810 Planning, Research, Development and Evaluation Services

Elementary

Secondary

Federal

Total

100 Personnel Services – Salaries

100 Personnel Services – Salaries 592,980.32

Total Personnel Services – Salaries \$592,980.32

200 Personnel Services – Employee Benefits

220 Social Security Contributions 43,012.51

230 PSERS Retirement Contributions 202,575.44

250 Unemployment Compensation 148.20

260 Workers' Compensation 4,906.44

270 Group Insurance – Self-Insurance 127,727.34

291 Other Retirement Plans 4,933.05

Total Personnel Services – Employee Benefits \$383,302.98

300 Purchased Professional and Technical Services

340 Technical Services 150,353.92

350 Security / Safety Services 28,658.90

Total Purchased Professional and Technical Services \$179,012.82

400 Purchased Property Services

430 Repairs and Maintenance Services 1,078,667.71

440 Rentals (152,068.53)

Total Purchased Property Services \$926,599.18

500 Other Purchased Services

530 Communications 536,037.22

580 Travel 1,557.60

Total Other Purchased Services \$537,594.82

600 Supplies

610 General Supplies 59,449.08

630 Food 349.42

650 Supplies & Fees – Technology Related 96,190.48

Total Supplies \$155,988.98

800 Other Objects

810 Dues and Fees 140.00

Total Other Objects \$140.00

Total 2810 Planning, Research, Development and Evaluation Services \$2,775,619.10

General Fund (10)

2820 Information Services

Elementary

Secondary

Federal

Total

100 Personnel Services – Salaries

100 Personnel Services – Salaries

153,487.00

Total Personnel Services – Salaries

\$153,487.00

200 Personnel Services – Employee Benefits

220 Social Security Contributions

10,805.09

230 PSERS Retirement Contributions

52,968.29

250 Unemployment Compensation

18.72

260 Workers' Compensation

619.92

270 Group Insurance – Self-Insurance

21,320.16

291 Other Retirement Plans

3,078.87

Total Personnel Services – Employee Benefits

\$88,811.05

Total 2820 Information Services

\$242,298.05

General Fund (10)

2821 Supervision of Information Services

Elementary

Secondary

Federal

Total

100 Personnel Services – Salaries

100 Personnel Services – Salaries

153,487.00

Total Personnel Services – Salaries

\$153,487.00

200 Personnel Services – Employee Benefits

220 Social Security Contributions

10,805.09

230 PSERS Retirement Contributions

52,968.29

250 Unemployment Compensation

18.72

260 Workers' Compensation

619.92

270 Group Insurance – Self-Insurance

21,320.16

291 Other Retirement Plans

3,078.87

Total Personnel Services – Employee Benefits

\$88,811.05

Total 2821 Supervision of Information Services

\$242,298.05

General Fund (10)

2830 Staff Services

	<u>Elementary</u>	<u>Secondary</u>	<u>Federal</u>	<u>Total</u>
100 Personnel Services – Salaries				
100 Personnel Services – Salaries				633,352.54
Total Personnel Services – Salaries				\$633,352.54
200 Personnel Services – Employee Benefits				
220 Social Security Contributions				44,483.22
230 PSERS Retirement Contributions				215,781.19
240 Tuition Reimbursement				7,407.48
250 Unemployment Compensation				170.82
260 Workers' Compensation				5,657.04
270 Group Insurance – Self-Insurance				151,036.80
291 Other Retirement Plans				5,935.39
Total Personnel Services – Employee Benefits				\$430,471.94
300 Purchased Professional and Technical Services				
330 Other Professional Services				133,216.47
360 Employee Training and Development Services				6,342.10
Total Purchased Professional and Technical Services				\$139,558.57
400 Purchased Property Services				
430 Repairs and Maintenance Services				26,296.06
Total Purchased Property Services				\$26,296.06
500 Other Purchased Services				
549 Other Advertising/Public Relations				16,084.16
Total Other Purchased Services				\$16,084.16
600 Supplies				
610 General Supplies				6,976.12
630 Food				334.33
640 Books and Periodicals				3,754.85
650 Supplies & Fees – Technology Related				5,000.90
Total Supplies				\$16,066.20
800 Other Objects				
810 Dues and Fees				2,864.96
Total Other Objects				\$2,864.96
Total 2830 Staff Services				\$1,264,694.43

General Fund (10)

2831 Supervision of Staff Services

Elementary

Secondary

Federal

Total

100 Personnel Services – Salaries

100 Personnel Services – Salaries

184,477.92

Total Personnel Services – Salaries

\$184,477.92

200 Personnel Services – Employee Benefits

220 Social Security Contributions

11,358.58

230 PSERS Retirement Contributions

63,663.35

250 Unemployment Compensation

18.72

260 Workers' Compensation

619.92

270 Group Insurance – Self-Insurance

21,320.16

291 Other Retirement Plans

3,697.04

Total Personnel Services – Employee Benefits

\$100,677.77

Total 2831 Supervision of Staff Services

\$285,155.69

General Fund (10)

2832 Recruitment and Placement Services

Elementary

Secondary

Federal

Total

100 Personnel Services – Salaries

100 Personnel Services – Salaries

448,874.62

Total Personnel Services – Salaries

\$448,874.62

200 Personnel Services – Employee Benefits

220 Social Security Contributions

33,124.64

230 PSERS Retirement Contributions

152,117.84

250 Unemployment Compensation

152.10

260 Workers' Compensation

5,037.12

270 Group Insurance – Self-Insurance

129,716.64

291 Other Retirement Plans

2,238.35

Total Personnel Services – Employee Benefits

\$322,386.69

300 Purchased Professional and Technical Services

330 Other Professional Services

133,216.47

Total Purchased Professional and Technical Services

\$133,216.47

400 Purchased Property Services

430 Repairs and Maintenance Services

26,296.06

Total Purchased Property Services

\$26,296.06

500 Other Purchased Services

549 Other Advertising/Public Relations

16,084.16

Total Other Purchased Services

\$16,084.16

600 Supplies

610 General Supplies

6,976.12

630 Food

334.33

640 Books and Periodicals

3,754.85

650 Supplies & Fees – Technology Related

5,000.90

Total Supplies

\$16,066.20

800 Other Objects

810 Dues and Fees

2,864.96

Total Other Objects

\$2,864.96

Total 2832 Recruitment and Placement Services

\$965,789.16

General Fund (10)

2834 Staff Development Services – Non-Instructional, Certified Staff Only

Elementary

Secondary

Federal

Total

200 Personnel Services – Employee Benefits

240 Tuition Reimbursement

7,407.48

Total Personnel Services – Employee Benefits

\$7,407.48

Total 2834 Staff Development Services – Non-Instructional, Certified Staff Only

\$7,407.48

General Fund (10)

2836 Staff Development Services – Non-Instructional, Non-Certified Staff Only

Elementary

Secondary

Federal

Total

300 Purchased Professional and Technical Services

360 Employee Training and Development Services

6,342.10

Total Purchased Professional and Technical Services

\$6,342.10

Total 2836 Staff Development Services – Non-Instructional, Non-Certified Staff Only

\$6,342.10

General Fund (10)

2850 State and Federal Agency Liaison Services	<u>Elementary</u>	<u>Secondary</u>	<u>Federal</u>	<u>Total</u>
100 Personnel Services – Salaries				
100 Personnel Services – Salaries			21,629.15	21,629.15
Total Personnel Services – Salaries			\$21,629.15	\$21,629.15
200 Personnel Services – Employee Benefits				
220 Social Security Contributions			1,606.61	1,606.61
230 PSERS Retirement Contributions			7,464.19	7,464.19
250 Unemployment Compensation			5.76	5.76
260 Workers' Compensation			185.88	185.88
270 Group Insurance – Self-Insurance			6,396.20	6,396.20
291 Other Retirement Plans			261.87	261.87
Total Personnel Services – Employee Benefits			\$15,920.51	\$15,920.51
Total 2850 State and Federal Agency Liaison Services			\$37,549.66	\$37,549.66

General Fund (10)

2900 Other Support Services

Elementary

Secondary

Federal

Total

500 Other Purchased Services

595 IU Payments By Withholding

140,822.85

596 Direct Payments To Intermediate Units

84,756.00

Total Other Purchased Services

\$225,578.85

Total 2900 Other Support Services

\$225,578.85

General Fund (10)

2910 Support Services Not Listed Elsewhere In the 2000 Series

Elementary

Secondary

Federal

Total

500 Other Purchased Services

595 IU Payments By Withholding

140,822.85

596 Direct Payments To Intermediate Units

84,756.00

Total Other Purchased Services

\$225,578.85

Total 2910 Support Services Not Listed Elsewhere In the 2000 Series

\$225,578.85

General Fund (10)

3000 Operation of Non-Instructional Services

Total

100 Personnel Services – Salaries

100 Personnel Services – Salaries 4,354,853.40

Total Personnel Services – Salaries \$4,354,853.40

200 Personnel Services – Employee Benefits

220 Social Security Contributions 327,436.58

230 PSERS Retirement Contributions 1,375,431.53

250 Unemployment Compensation 1,907.88

260 Workers' Compensation 63,301.50

270 Group Insurance – Self-Insurance 219,931.04

291 Other Retirement Plans 6,668.35

Total Personnel Services – Employee Benefits \$1,994,676.88

300 Purchased Professional and Technical Services

329 Professional Educational Services – Other 16,114.00

330 Other Professional Services 481,715.78

Total Purchased Professional and Technical Services \$497,829.78

400 Purchased Property Services

430 Repairs and Maintenance Services 2,945.50

Total Purchased Property Services \$2,945.50

500 Other Purchased Services

580 Travel (9,106.38)

Total Other Purchased Services (\$9,106.38)

600 Supplies

610 General Supplies 478,404.17

630 Food 28,677.60

650 Supplies & Fees – Technology Related (590.00)

Total Supplies \$506,491.77

700 Property

762 Capitalized Equipment - Replacement 4,992.49

Total Property \$4,992.49

800 Other Objects

810 Dues and Fees 31,119.09

Total Other Objects \$31,119.09

Total 3000 Operation of Non-Instructional Services \$7,383,802.53

General Fund (10)

	<u>Elementary</u>	<u>Secondary</u>	<u>Federal</u>	<u>Total</u>
3200 Student Activities				
100 Personnel Services – Salaries				
100 Personnel Services – Salaries				2,866,713.54
Total Personnel Services – Salaries				\$2,866,713.54
200 Personnel Services – Employee Benefits				
220 Social Security Contributions				215,868.64
230 PSERS Retirement Contributions				965,005.21
250 Unemployment Compensation				531.18
260 Workers' Compensation				17,609.94
270 Group Insurance – Self-Insurance				122,535.04
291 Other Retirement Plans				5,274.64
Total Personnel Services – Employee Benefits				\$1,326,824.65
300 Purchased Professional and Technical Services				
330 Other Professional Services				467,939.72
Total Purchased Professional and Technical Services				\$467,939.72
500 Other Purchased Services				
580 Travel				(11,092.31)
Total Other Purchased Services				(\$11,092.31)
600 Supplies				
610 General Supplies				356,806.74
650 Supplies & Fees – Technology Related				(590.00)
Total Supplies				\$356,216.74
700 Property				
762 Capitalized Equipment - Replacement				4,992.49
Total Property				\$4,992.49
800 Other Objects				
810 Dues and Fees				31,069.09
Total Other Objects				\$31,069.09
Total 3200 Student Activities				\$5,042,663.92

General Fund (10)

	<u>Elementary</u>	<u>Secondary</u>	<u>Federal</u>	<u>Total</u>
3300 Community Services				
100 Personnel Services – Salaries				
100 Personnel Services – Salaries				1,488,139.86
Total Personnel Services – Salaries				\$1,488,139.86
200 Personnel Services – Employee Benefits				
220 Social Security Contributions				111,567.94
230 PSERS Retirement Contributions				410,426.32
250 Unemployment Compensation				1,376.70
260 Workers' Compensation				45,691.56
270 Group Insurance – Self-Insurance				97,396.00
291 Other Retirement Plans				1,393.71
Total Personnel Services – Employee Benefits				\$667,852.23
300 Purchased Professional and Technical Services				
329 Professional Educational Services – Other				16,114.00
330 Other Professional Services				13,776.06
Total Purchased Professional and Technical Services				\$29,890.06
400 Purchased Property Services				
430 Repairs and Maintenance Services				2,945.50
Total Purchased Property Services				\$2,945.50
500 Other Purchased Services				
580 Travel				1,985.93
Total Other Purchased Services				\$1,985.93
600 Supplies				
610 General Supplies			10,588.97	121,597.43
630 Food				28,677.60
Total Supplies			\$10,588.97	\$150,275.03
800 Other Objects				
810 Dues and Fees			50.00	50.00
Total Other Objects			\$50.00	\$50.00
Total 3300 Community Services			\$10,638.97	\$2,341,138.61

General Fund (10)

5000 Other Expenditures and Financing Uses

Total

800 Other Objects

830 Interest	922,799.34
880 Refunds of Prior Years' Receipts	30,751.07

Total Other Objects	\$953,550.41
----------------------------	---------------------

900 Other Uses of Funds

910 Redemption of Principal	20,825,000.00
939 Other Fund Transfers	6,500,000.00

Total Other Uses of Funds	\$27,325,000.00
----------------------------------	------------------------

Total 5000 Other Expenditures and Financing Uses	\$28,278,550.41
---	------------------------

General Fund (10)

5100 Debt Service / Other Expenditures and Financing Uses	<u>Elementary</u>	<u>Secondary</u>	<u>Federal</u>	<u>Total</u>
800 Other Objects				
830 Interest				922,799.34
880 Refunds of Prior Years' Receipts				30,751.07
Total Other Objects				\$953,550.41
900 Other Uses of Funds				
910 Redemption of Principal				20,825,000.00
Total Other Uses of Funds				\$20,825,000.00
Total 5100 Debt Service / Other Expenditures and Financing Uses				\$21,778,550.41

LEA : 122092102 Central Bucks SD

Printed 12/1/2021 8:42:14 AM

General Fund (10)

	<u>Elementary</u>	<u>Secondary</u>	<u>Federal</u>	<u>Total</u>
5110 Debt Service				
800 Other Objects				
830 Interest				586,919.89
Total Other Objects				\$586,919.89
900 Other Uses of Funds				
910 Redemption of Principal				6,225,000.00
Total Other Uses of Funds				\$6,225,000.00
Total 5110 Debt Service				\$6,811,919.89

LEA : 122092102 Central Bucks SD

Printed 12/1/2021 8:42:14 AM

General Fund (10)

	<u>Elementary</u>	<u>Secondary</u>	<u>Federal</u>	<u>Total</u>
5120 Debt Service – Refunded Bonds				
800 Other Objects				
830 Interest				335,879.45
Total Other Objects				\$335,879.45
900 Other Uses of Funds				
910 Redemption of Principal				14,600,000.00
Total Other Uses of Funds				\$14,600,000.00
Total 5120 Debt Service – Refunded Bonds				\$14,935,879.45

General Fund (10)

5130 Refund of Prior Year Revenues / Receipts

Elementary

Secondary

Federal

Total

800 Other Objects

880 Refunds of Prior Years' Receipts

30,751.07

Total Other Objects

\$30,751.07

Total 5130 Refund of Prior Year Revenues / Receipts

\$30,751.07

General Fund (10)

	<u>Elementary</u>	<u>Secondary</u>	<u>Federal</u>	<u>Total</u>
5200 Interfund Transfers – Out				
900 <u>Other Uses of Funds</u>				
939 Other Fund Transfers				6,500,000.00
Total Other Uses of Funds				\$6,500,000.00
Total 5200 Interfund Transfers – Out				\$6,500,000.00

LEA : 122092102 Central Bucks SD

Printed 12/1/2021 8:42:14 AM

General Fund (10)

5230 Capital Projects Fund Transfers

Elementary

Secondary

Federal

Total

900 Other Uses of Funds

939 Other Fund Transfers

6,500,000.00

Total Other Uses of Funds

\$6,500,000.00

Total 5230 Capital Projects Fund Transfers

\$6,500,000.00

Other Capital Projects Fund (39)

2000 Support Services

700 Property

752 Capital Equipment – Original and Additional

5,359,385.00

762 Capitalized Equipment - Replacement

780,760.00

Total Property **\$6,140,145.00**

Total 2000 Support Services **\$6,140,145.00**

LEA : 122092102 Central Bucks SD

Printed 12/1/2021 8:41:59 AM

Other Capital Projects Fund (39)

2200 Support Services – Instructional Staff

700 Property

752 Capital Equipment – Original and Additional

	<u>Elementary</u>	<u>Secondary</u>	<u>Federal</u>	<u>Total</u>
		5,187,736.00		5,187,736.00
Total Property		\$5,187,736.00		\$5,187,736.00
Total 2200 Support Services – Instructional Staff		\$5,187,736.00		\$5,187,736.00

Other Capital Projects Fund (39)

2240 Computer-Assisted Instruction Support Services

Elementary

Secondary

Federal

Total

700 Property

752 Capital Equipment – Original and Additional

5,187,736.00

5,187,736.00

Total Property

\$5,187,736.00

\$5,187,736.00

Total 2240 Computer-Assisted Instruction Support Services

\$5,187,736.00

\$5,187,736.00

Other Capital Projects Fund (39)

2600 Operation and Maintenance of Plant Services

Elementary

Secondary

Federal

Total

700 Property

752 Capital Equipment – Original and Additional

171,649.00

171,649.00

Total Property

\$171,649.00

\$171,649.00

Total 2600 Operation and Maintenance of Plant Services

\$171,649.00

\$171,649.00

LEA : 122092102 Central Bucks SD

Printed 12/1/2021 8:41:59 AM

Other Capital Projects Fund (39)

2620 Operation of Buildings Services

Elementary

Secondary

Federal

Total

700 Property

752 Capital Equipment – Original and Additional

171,649.00

171,649.00

Total Property

\$171,649.00

\$171,649.00

Total 2620 Operation of Buildings Services

\$171,649.00

\$171,649.00

LEA : 122092102 Central Bucks SD

Printed 12/1/2021 8:41:59 AM

Other Capital Projects Fund (39)

2700 Student Transportation Services

Elementary

Secondary

Federal

Total

700 Property

762 Capitalized Equipment - Replacement

780,760.00

780,760.00

Total Property

\$780,760.00

\$780,760.00

Total 2700 Student Transportation Services

\$780,760.00

\$780,760.00

LEA : 122092102 Central Bucks SD

Printed 12/1/2021 8:41:59 AM

Other Capital Projects Fund (39)

2720 Vehicle Operation Services

Elementary

Secondary

Federal

Total

700 Property

762 Capitalized Equipment - Replacement

780,760.00

780,760.00

Total Property

\$780,760.00

\$780,760.00

Total 2720 Vehicle Operation Services

\$780,760.00

\$780,760.00

Other Capital Projects Fund (39)

4000 Facilities Acquisition, Construction and Improvement Services

Total

400 Purchased Property Services

450 Construction Services

14,851,032.00

Total Purchased Property Services

\$14,851,032.00

Total 4000 Facilities Acquisition, Construction and Improvement Services

\$14,851,032.00

Other Capital Projects Fund (39)

4500 Building Acquisition and Construction Services – Original and Additional

Elementary

Secondary

Federal

Total

400 Purchased Property Services

450 Construction Services

14,851,032.00

Total Purchased Property Services

\$14,851,032.00

Total 4500 Building Acquisition and Construction Services – Original and Additional

\$14,851,032.00

	<u>General Fund(10)</u>	<u>Student Sponsored Activity Fund(21)</u>	<u>Public Purpose Trust(27)</u>	<u>Other Compt Approved (28)</u>	<u>Athletic / Activity(29)</u>
1000 Instruction					
1100 Regular Programs - Elementary / Secondary	153,753,044.27				
1200 Special Programs - Elementary / Secondary	49,112,593.61				
1300 Vocational Education	5,050,217.20				
1400 Other Instructional Programs - Elementary / Secondary	2,945,466.85				
1500 Nonpublic School Programs	15,455.02				
Total Instruction	\$210,876,776.95				
2000 Support Services					
2100 Support Services - Students	14,602,165.05				
2200 Support Services - Instructional Staff	13,856,112.34				
2300 Support Services - Administration	15,634,579.46				
2400 Support Services - Pupil Health	4,249,233.30				
2500 Support Services - Business	1,752,468.06				
2600 Operation and Maintenance of Plant Services	26,841,310.14				
2700 Student Transportation Services	19,196,357.12				
2800 Support Services - Central	4,320,161.24				
2900 Other Support Services	225,578.85				
Total Support Services	\$100,677,965.56				
3000 Operation of Non-Instructional Services					
3200 Student Activities	5,042,663.92				
3300 Community Services	2,341,138.61				
Total Operation of Non-Instructional Services	\$7,383,802.53				
4000 Facilities Acquisition, Construction and Improvement Services					
4500 Building Acquisition and Construction Services - Original and Additional					
Total Facilities Acquisition, Construction and Improvement Services					
5000 Other Expenditures and Financing Uses					
5100 Debt Service / Other Expenditures and Financing Uses	21,778,550.41				
5200 Interfund Transfers - Out	6,500,000.00				
Total Other Expenditures and Financing Uses	\$28,278,550.41				
TOTAL ACTUAL EXPENDITURES & OTHER FINANCING USES	\$347,217,095.45				

	<u>Capital Reserve (690. 1850)(31)</u>	<u>Capital Reserve (1431)(32)</u>	<u>Other Capital Projects Fund(39)</u>	<u>Debt Service(40)</u>	<u>Permanent(90)</u>
1000 Instruction					
1100 Regular Programs - Elementary / Secondary					
1200 Special Programs - Elementary / Secondary					
1300 Vocational Education					
1400 Other Instructional Programs - Elementary / Secondary					
1500 Nonpublic School Programs					
Total Instruction					
2000 Support Services					
2100 Support Services - Students					
2200 Support Services - Instructional Staff			5,187,736.00		
2300 Support Services - Administration					
2400 Support Services - Pupil Health					
2500 Support Services - Business					
2600 Operation and Maintenance of Plant Services			171,649.00		
2700 Student Transportation Services			780,760.00		
2800 Support Services - Central					
2900 Other Support Services					
Total Support Services					
			\$6,140,145.00		
3000 Operation of Non-Instructional Services					
3200 Student Activities					
3300 Community Services					
Total Operation of Non-Instructional Services					
4000 Facilities Acquisition, Construction and Improvement Services					
4500 Building Acquisition and Construction Services - Original and Additional			14,851,032.00		
Total Facilities Acquisition, Construction and Improvement Services					
			\$14,851,032.00		
5000 Other Expenditures and Financing Uses					
5100 Debt Service / Other Expenditures and Financing Uses					
5200 Interfund Transfers - Out					
Total Other Expenditures and Financing Uses					
TOTAL ACTUAL EXPENDITURES & OTHER FINANCING USES					
			\$20,991,177.00		

Total

1000 <u>Instruction</u>	
1100 Regular Programs - Elementary / Secondary	153,753,044.27
1200 Special Programs - Elementary / Secondary	49,112,593.61
1300 Vocational Education	5,050,217.20
1400 Other Instructional Programs - Elementary / Secondary	2,945,466.85
1500 Nonpublic School Programs	15,455.02
Total Instruction	\$210,876,776.95
2000 <u>Support Services</u>	
2100 Support Services - Students	14,602,165.05
2200 Support Services - Instructional Staff	19,043,848.34
2300 Support Services - Administration	15,634,579.46
2400 Support Services - Pupil Health	4,249,233.30
2500 Support Services - Business	1,752,468.06
2600 Operation and Maintenance of Plant Services	27,012,959.14
2700 Student Transportation Services	19,977,117.12
2800 Support Services - Central	4,320,161.24
2900 Other Support Services	225,578.85
Total Support Services	\$106,818,110.56
3000 <u>Operation of Non-Instructional Services</u>	
3200 Student Activities	5,042,663.92
3300 Community Services	2,341,138.61
Total Operation of Non-Instructional Services	\$7,383,802.53
4000 <u>Facilities Acquisition, Construction and Improvement Services</u>	
4500 Building Acquisition and Construction Services - Original and Additional	14,851,032.00
Total Facilities Acquisition, Construction and Improvement Services	\$14,851,032.00
5000 <u>Other Expenditures and Financing Uses</u>	
5100 Debt Service / Other Expenditures and Financing Uses	21,778,550.41
5200 Interfund Transfers - Out	6,500,000.00
Total Other Expenditures and Financing Uses	\$28,278,550.41
TOTAL ACTUAL EXPENDITURES & OTHER FINANCING USES	\$368,208,272.45

PSERS Salary Data (Salary Data should relate to the General Fund only)

Amount Description	Amount
Total Salary Base for salaries subject to PSERS withholding	167,740,170.96
Total Federally Funded salaries subject to PSERS withholding	2,060,996.54
	<hr/>

Title I Expenditure Data

Amount Description	Amount
Expenditures Funded with Current Title I Funds	659,249.07
Expenditures Funded with Carry over Title I Funds	
Total Title I Expenditure Data	\$659,249.07
	<hr/>

Title IV Revenue Data

Amount Description	Amount
Revenue from Title IV-A-1: Student Support and Academic Enrichment Grants	79,017.62
Revenue from Title IV-B: 21st Century Community Learning Centers	
	<hr/>

Title V Revenue Data

Amount Description	Amount
Revenue from Title V-B-2: Rural and Low-Income School Programs	
Revenue from Title V-B-1: Small Rural School Achievement (Directly from the Federal Govt)	
	<hr/>

1 .	<u>Current Special Education Expenditures/Expenses within Functions 1000, 2000, 3100, and 3200</u>	151,403,425.00
2 .	<u>Current Special Education Expenditures for Instruction Functions 1000 and 3200</u>	52,669,250.00
3 .	<u>Current Special Education Expenditures for Pupil Support Services Function 2100</u>	14,591,545.00
4 .	<u>Current Special Education Expenditures for Instructional Staff Support Services Function 2200</u>	13,844,426.00
5 .	<u>Current Special Education Expenditures for Student Transportation Support Services Function 2700</u>	17,951,056.00

Note: Do not report total Special Education expenditures for the functions listed above. Refer to the AFR User Manual for specific instructions on Funds/Functions/Objects to be included and excluded on each line.

Benefits for Staff Relative to Collective Bargaining Agreements

	OBJECT	COVERED	NOT COVERED	TOTAL
10 General Fund				
	211 Medical Insurance			
	212 Dental Insurance			
	215 Eye Care Insurance			
	216 Prescription Insurance			
	271 Self-Insurance Medical Benefits	23,092,883.78	1,215,414.94	24,308,298.72
	272 Self-Insurance Dental Benefits	1,264,838.48	66,570.45	1,331,408.93
	275 Self-Insurance Eye Care Benefits			
	276 Self-Insurance Prescription Benefits	6,425,603.21	338,189.64	6,763,792.85
	FUND TOTAL	\$30,783,325.47	\$1,620,175.03	\$32,403,500.50
50 Enterprise Fund	No Self Insurance data to report			
	211 Medical Insurance			
	212 Dental Insurance			
	215 Eye Care Insurance			
	216 Prescription Insurance			
	271 Self-Insurance Medical Benefits			
	272 Self-Insurance Dental Benefits			
	275 Self-Insurance Eye Care Benefits			
	276 Self-Insurance Prescription Benefits			
	FUND TOTAL			
60 Internal Service Fund	No Self Insurance data to report			
	211 Medical Insurance			
	212 Dental Insurance			
	215 Eye Care Insurance			
	216 Prescription Insurance			
	271 Self-Insurance Medical Benefits			
	272 Self-Insurance Dental Benefits			
	275 Self-Insurance Eye Care Benefits			
	276 Self-Insurance Prescription Benefits			
	FUND TOTAL			
Total of All Funds		\$30,783,325.47	\$1,620,175.03	\$32,403,500.50

LEA : 122092102 Central Bucks SD

Printed 12/1/2021 8:42:53 AM

Function	Special Education (Prior Year)	Nonspecial Education (Prior Year)	Total (Prior Year)	Special Education (Current Year)	Nonspecial Education (Current Year)	Total (Current Year)
2120 Guidance Services	2,880,763.53	5,234,063.32	8,114,826.85	2,972,276.73	5,400,333.77	8,372,610.50
2140 Psychological Services	1,951,091.29	216,787.92	2,167,879.21	2,032,685.89	225,853.99	2,258,539.88
2150 Speech Pathology and Audiology Services	2,212,609.99	245,845.55	2,458,455.54	2,318,072.48	257,563.61	2,575,636.09
2160 Social Work Services				2,839.54		2,839.54
2260 Instruction and Curriculum Development Services	115,533.15	2,195,129.77	2,310,662.92	118,911.86	2,259,325.38	2,378,237.24
2350 Legal and Accounting Services	123,246.03	83,542.61	206,788.64	137,220.21	93,015.04	230,235.25
2420 Medical Services						
2440 Nursing Services	1,499,361.22	2,724,191.51	4,223,552.73	1,471,237.46	2,673,093.40	4,144,330.86
2700 Student Transportation Services	1,719,344.23	16,377,479.67	18,096,823.90	1,805,656.48	17,201,253.83	19,006,910.31
Total	\$10,501,949.44	\$27,077,040.35	\$37,578,989.79	\$10,858,900.65	\$28,110,439.02	\$38,969,339.67

(PRINCIPAL AMOUNTS ONLY)

GOVERNMENTAL FUNDS/ ACTIVITIES

	Short-Term Borrowing	General Obligation Bonds/Notes	Authority Building Obligations	Other Long-Term Debt	Other Post-Employment Benefits (OPEB)	Compensated Absences	Net Pension Liability	Total
1. Debt at Beginning of Fiscal Year		18,320,000.00			80,434,976.00	2,035,229.00	545,906,000.00	646,696,205.00
2. Additional Debt Incurred During Year		14,600,000.00			21,310,524.00		35,656,000.00	71,566,524.00
3. Retirements and Repayments		20,825,000.00				59,561.00		20,884,561.00
4. Debt at End of Fiscal Year		12,095,000.00			101,745,500.00	1,975,668.00	581,562,000.00	697,378,168.00
5. Accreted Interest at End Of Fiscal Year								
6. Total Debt and Accreted Interest		12,095,000.00			101,745,500.00	1,975,668.00	581,562,000.00	697,378,168.00
7. Current Portion P&I - Due within 1 year		4,415,750.00						4,415,750.00
8. Interest Paid during current fiscal year		922,799.38						922,799.38

(PRINCIPAL AMOUNTS ONLY)

PROPRIETARY FUNDS

- 1. Debt at Beginning of Fiscal Year
- 2. Additional Debt Incurred During Year
- 3. Retirements and Repayments
- 4. Debt at End of Fiscal Year
- 5. Accreted Interest at End Of Fiscal Year
- 6. Total Debt and Accreted Interest
- 7. Current Portion P&I - Due within 1 year
- 8. Interest Paid during current fiscal year

Total Principal and Interest Payments Made by Your School - All Funds

Function	Fund		Principal (910)	Principal (920)	Interest (830)	Total (Principal +Interest)	Misc Other Uses (990)
5110	10	General Fund	6,225,000.00		586,919.89	6,811,919.89	
5110	20	Special Revenue Funds					
5110	30	Capital Projects Funds					
5110	40	Debt Service Fund					
5110	90	Permanent Fund					
5120	10	General Fund	14,600,000.00		335,879.45	14,935,879.45	
5120	20	Special Revenue Funds					
5120	30	Capital Projects Funds					
5120	40	Debt Service Fund					

Total Debt Payments - Governmental Funds			\$20,825,000.00		\$922,799.34	\$21,747,799.34	
---	--	--	------------------------	--	---------------------	------------------------	--

Function	Fund		Principal (910)	Principal (920)	Interest (830)	Total (Principal +Interest)
5110	50	Enterprise Fund				
5110	60	Internal Service Fund				
5120	50	Enterprise Fund				
5120	60	Internal Service Fund				

Total Debt Payments - Proprietary Funds							
--	--	--	--	--	--	--	--

Debt Details
Governmental Funds/ Activities

Debt Category	Debt Issue Date (MM/YYYY)	Principal Amounts Only				Current Portion Due Within One Year (Principal and Interest)	Interest Paid During Fiscal Year
		Debt at Beginning of Fiscal Year	Additions	Reductions / Repayments	Debt at End of Fiscal Year		
General Obligation Bonds/Notes – CIB	03/2021		14,600,000.00	2,840,000.00	11,760,000.00	4,080,750.00	65,049.74
General Obligation Bonds/Notes – CIB	02/2011	14,600,000.00		14,600,000.00			764,749.74
General Obligation Bonds/Notes – CIB	04/2007	3,720,000.00		3,385,000.00	335,000.00	335,000.00	92,999.90
Compensated Absences		2,035,229.00		59,561.00	1,975,668.00		
Other Post-Employment Benefits (OPEB)		80,434,976.00	21,310,524.00		101,745,500.00		
Net Pension Liability		545,906,000.00	35,656,000.00		581,562,000.00		
Totals for Debt Entered:		\$646,696,205.00	\$71,566,524.00	\$20,884,561.00	\$697,378,168.00	\$4,415,750.00	\$922,799.38

General Fund (10)

Section 1: Tuition/Purchased Services as Reported within Expenditure Detail

	Amount
Tuition Reported in General Fund Expenditures 1000-560	12,103,985.13
Purchased Services in General Fund Expenditures 1000-594 and 1000-597	15,226.65
Section 1 Total	\$12,119,211.78

Section 2: Tuition Paid to Institution Types During Fiscal Year

	Tuition Paid For Nonspecial Education	Tuition Paid For Special Education	Total
1 1306 Institutions	1,889.59	470,508.82	472,398.41
2 Institutionalized Children's Programs		2,590.85	2,590.85
3 Juveniles Incarcerated in Adult Facilities	22,686.59	160,269.93	182,956.52
4 Residential Treatment Facilities	52,186.98	139,535.96	191,722.94
5 Other Local Education Agencies	3,323.20	41,584.88	44,908.08
6 Brick and Mortar Charter Schools	99,567.36	44,126.27	143,693.63
7 Cyber Charter Schools	2,205,232.54	951,160.66	3,156,393.20
8 Career and Technology Centers	2,701,263.94	2,210,125.05	4,911,388.99
9 Approved Private Schools		310,038.45	310,038.45
10 PA Chartered Schools for the Deaf and Blind			
11 Private Residential Rehabilitative Institutions			
12 Juvenile Detention Centers			
13 Special Program Jointures			
14 Other Tuition Not Included Elsewhere In This Section	163,993.50	2,539,127.21	2,703,120.71
Section 2 Total	\$5,250,143.70	\$6,869,068.08	\$12,119,211.78

- 1 . Student Transportation Services for Educational Field Trips

- 2 . Student Transportation Services for Student Activities

- 3 . Rental of Vehicles for Student Transportation Services

- 4 . Capital Reserve Funds 6,764.00

Include only district-owned transportation expenditures paid from State or local money.
 DO NOT include federal expenditures or payments to contract service providers.
 Contracted transportation services should not be recorded on this schedule.

Food Service / Cafeteria Operations Fund (51)

3000 Operation of Non-Instructional Services

Total

200 Personnel Services – Employee Benefits

299 All Other Employee Benefits

6.00

Total Personnel Services – Employee Benefits

\$6.00

300 Purchased Professional and Technical Services

340 Technical Services

1,708.00

Total Purchased Professional and Technical Services

\$1,708.00

400 Purchased Property Services

430 Repairs and Maintenance Services

389,084.00

Total Purchased Property Services

\$389,084.00

500 Other Purchased Services

570 Food Service Management

4,516,483.00

Total Other Purchased Services

\$4,516,483.00

600 Supplies

610 General Supplies

16,305.00

Total Supplies

\$16,305.00

700 Property

740 Depreciation

53,142.00

Total Property

\$53,142.00

800 Other Objects

800 Other Objects

(3,056.00)

Total Other Objects

(\$3,056.00)

Total 3000 Operation of Non-Instructional Services

\$4,973,672.00

Food Service / Cafeteria Operations Fund (51)

	<u>Elementary</u>	<u>Secondary</u>	<u>Federal</u>	<u>Total</u>
3100 Food Services				
200 Personnel Services – Employee Benefits				
299 All Other Employee Benefits				6.00
Total Personnel Services – Employee Benefits				\$6.00
300 Purchased Professional and Technical Services				
340 Technical Services				1,708.00
Total Purchased Professional and Technical Services				\$1,708.00
400 Purchased Property Services				
430 Repairs and Maintenance Services				389,084.00
Total Purchased Property Services				\$389,084.00
500 Other Purchased Services				
570 Food Service Management				4,516,483.00
Total Other Purchased Services				\$4,516,483.00
600 Supplies				
610 General Supplies				16,305.00
Total Supplies				\$16,305.00
700 Property				
740 Depreciation				53,142.00
Total Property				\$53,142.00
800 Other Objects				
800 Other Objects				(3,056.00)
Total Other Objects				(\$3,056.00)
Total 3100 Food Services				\$4,973,672.00

	<u>Food Service(51)</u>	<u>Child Care Operations(52)</u>	<u>Other Enterprise(58)</u>	<u>Internal Service(60)</u>	<u>Total</u>
3000 <u>Operation of Non-Instructional Services</u>					
3100 Food Services	4,973,672.00				4,973,672.00
Total Operation of Non-Instructional Services	\$4,973,672.00				\$4,973,672.00
TOTAL ACTUAL EXPENDITURES & OTHER FINANCING USES	\$4,973,672.00				\$4,973,672.00

LEA : 122092102 Central Bucks SD

Printed 12/1/2021 8:43:33 AM

Fund	School	School Number	Local Personnel	Local Nonpersonnel	State Personnel	State Nonpersonnel	Federal Personnel	Federal Nonpersonnel	Total	Explanation
10	Barclay El Sch	4683	7,514,733.00	729,358.00	2,048,634.00	198,834.00	602,082.00	54,731.00	11,148,372.00	
	Bridge Valley El Sch	7796	8,379,168.00	850,313.00	2,284,292.00	231,809.00	9,136.00	53,761.00	11,808,479.00	
	Buckingham El Sch	1044	5,704,535.00	507,910.00	1,555,146.00	138,464.00	5,756.00	33,873.00	7,945,684.00	
	Butler El Sch	1081	9,260,120.00	927,335.00	2,524,453.00	252,806.00	11,076.00	65,182.00	13,040,972.00	
	Central Bucks HS-East	5133	18,639,921.00	1,861,581.00	5,081,534.00	507,496.00	80,417.00	113,117.00	26,284,066.00	
	Central Bucks HS-South	7790	19,859,522.00	2,259,083.00	5,414,016.00	615,861.00	89,254.00	125,547.00	28,363,283.00	
	Central Bucks HS-West	1043	17,404,865.00	1,817,181.00	4,744,838.00	495,392.00	78,153.00	109,931.00	24,650,360.00	
	Cold Spring El Sch	7435	6,103,046.00	577,315.00	1,663,786.00	157,385.00	6,469.00	38,068.00	8,546,069.00	
	Doyle El Sch	4852	5,587,876.00	531,185.00	1,523,342.00	144,809.00	68,486.00	37,409.00	7,893,107.00	
	Gayman El Sch	1048	5,092,667.00	467,470.00	1,388,341.00	127,440.00	5,347.00	31,464.00	7,112,729.00	
	Groveland El Sch	7653	9,915,392.00	1,011,012.00	2,703,091.00	275,618.00	267,561.00	121,862.00	14,294,536.00	
	Holicong MS	5307	12,006,195.00	1,147,024.00	3,273,076.00	312,697.00	54,072.00	76,058.00	16,869,122.00	
	Jamison El Sch	7520	6,814,665.00	639,489.00	1,857,784.00	174,335.00	7,340.00	43,196.00	9,536,809.00	
	Kutz El Sch	1047	6,045,044.00	589,867.00	1,647,974.00	160,807.00	6,720.00	39,544.00	8,489,956.00	
	Lenape MS	1041	11,012,627.00	1,069,698.00	3,002,214.00	291,617.00	49,156.00	69,144.00	15,494,456.00	
	Linden El Sch	1057	4,918,000.00	484,071.00	1,340,724.00	131,965.00	35,827.00	32,474.00	6,943,061.00	
	Mill Creek El Sch	7654	8,191,397.00	859,608.00	2,233,103.00	234,343.00	9,347.00	55,004.00	11,582,802.00	
	Pine Run El Sch	5306	5,698,296.00	557,810.00	1,553,444.00	152,068.00	6,271.00	36,903.00	8,004,792.00	
	Tamanend MS	1042	10,254,077.00	1,003,345.00	2,795,422.00	273,527.00	4,678.00	65,803.00	14,396,852.00	
	Titus El Sch	1131	6,990,740.00	709,978.00	1,905,785.00	193,551.00	19,432.00	50,436.00	9,869,922.00	
	Tohickon MS	7715	10,568,649.00	1,221,664.00	2,881,179.00	333,045.00	49,874.00	70,154.00	15,124,565.00	
	Unami MS	4678	10,131,529.00	1,054,571.00	2,762,013.00	287,492.00	47,941.00	67,435.00	14,350,981.00	
	Warwick El Sch	1132	6,107,718.00	584,367.00	1,665,059.00	159,307.00	68,391.00	42,574.00	8,627,416.00	
Total			212,200,782.00	21,461,235.00	57,849,250.00	5,850,668.00	1,582,786.00	1,433,670.00	300,378,391.00	

	<u>Nonspecial Education</u>	<u>Special Education</u>
1000 Instruction		
1100 Regular Programs - Elementary / Secondary	24,664.00	174,230.00
Total Instruction	\$24,664.00	\$174,230.00
2000 Support Services		
2200 Support Services - Instructional Staff	57.00	401.00
Total Support Services	\$57.00	\$401.00
5000 Other Expenditures and Financing Uses		
5200 Interfund Transfers - Out	989.00	6,985.00
Total Other Expenditures and Financing Uses	\$989.00	\$6,985.00
TOTAL ACTUAL EXPENDITURES & OTHER FINANCING USES	\$25,710.00	\$181,616.00

LEA : 122092102 Central Bucks SD

Printed 12/1/2021 8:43:45 AM

1000 Instruction		
100 Personnel Services - Salaries		
100 Personnel Services - Salaries	14,487.00	102,338.00
Total Personnel Services - Salaries	\$14,487.00	\$102,338.00
200 Personnel Services - Employee Benefits		
220 Social Security Contributions	1,051.00	7,427.00
230 PSERS Retirement Contributions	4,992.00	35,268.00
260 Workers' Compensation	215.00	1,518.00
270 Group Insurance - Self-Insurance	3,689.00	26,062.00
291 Other Retirement Plans	53.00	374.00
Total Personnel Services - Employee Benefits	\$10,000.00	\$70,649.00
300 Purchased Professional and Technical Services		
340 Technical Services	160.00	1,130.00
Total Purchased Professional and Technical Services	\$160.00	\$1,130.00
400 Purchased Property Services		
430 Repairs and Maintenance Services	9.00	63.00
440 Rentals	2.00	11.00
Total Purchased Property Services	\$11.00	\$74.00
500 Other Purchased Services		
530 Communications	4.00	25.00
Total Other Purchased Services	\$4.00	\$25.00
600 Supplies		
610 General Supplies	2.00	14.00
Total Supplies	\$2.00	\$14.00
Total 1000 Instruction	\$24,664.00	\$174,230.00

LEA : 122092102 Central Bucks SD

Printed 12/1/2021 8:43:45 AM

1100 Regular Programs - Elementary / Secondary	<u>Nonspecial Education</u>	<u>Special Education</u>
100 Personnel Services - Salaries		
100 Personnel Services - Salaries	14,487.00	102,338.00
Total Personnel Services - Salaries	\$14,487.00	\$102,338.00
200 Personnel Services - Employee Benefits		
220 Social Security Contributions	1,051.00	7,427.00
230 PSERS Retirement Contributions	4,992.00	35,268.00
260 Workers' Compensation	215.00	1,518.00
270 Group Insurance - Self-Insurance	3,689.00	26,062.00
291 Other Retirement Plans	53.00	374.00
Total Personnel Services - Employee Benefits	\$10,000.00	\$70,649.00
300 Purchased Professional and Technical Services		
340 Technical Services	160.00	1,130.00
Total Purchased Professional and Technical Services	\$160.00	\$1,130.00
400 Purchased Property Services		
430 Repairs and Maintenance Services	9.00	63.00
440 Rentals	2.00	11.00
Total Purchased Property Services	\$11.00	\$74.00
500 Other Purchased Services		
530 Communications	4.00	25.00
Total Other Purchased Services	\$4.00	\$25.00
600 Supplies		
610 General Supplies	2.00	14.00
Total Supplies	\$2.00	\$14.00
Total 1100 Regular Programs - Elementary / Secondary	\$24,664.00	\$174,230.00

LEA : 122092102 Central Bucks SD

Printed 12/1/2021 8:43:45 AM

1110 Regular Programs	<u>Nonspecial Education</u>	<u>Special Education</u>
100 Personnel Services - Salaries		
100 Personnel Services - Salaries	14,487.00	102,338.00
Total Personnel Services - Salaries	\$14,487.00	\$102,338.00
200 Personnel Services - Employee Benefits		
220 Social Security Contributions	1,051.00	7,427.00
230 PSERS Retirement Contributions	4,992.00	35,268.00
260 Workers' Compensation	215.00	1,518.00
270 Group Insurance - Self-Insurance	3,689.00	26,062.00
291 Other Retirement Plans	53.00	374.00
Total Personnel Services - Employee Benefits	\$10,000.00	\$70,649.00
300 Purchased Professional and Technical Services		
340 Technical Services	160.00	1,130.00
Total Purchased Professional and Technical Services	\$160.00	\$1,130.00
400 Purchased Property Services		
430 Repairs and Maintenance Services	9.00	63.00
440 Rentals	2.00	11.00
Total Purchased Property Services	\$11.00	\$74.00
500 Other Purchased Services		
530 Communications	4.00	25.00
Total Other Purchased Services	\$4.00	\$25.00
600 Supplies		
610 General Supplies	2.00	14.00
Total Supplies	\$2.00	\$14.00
Total 1110 Regular Programs	\$24,664.00	\$174,230.00

LEA : 122092102 Central Bucks SD

Printed 12/1/2021 8:43:45 AM

2000 Support Services

200 Personnel Services - Employee Benefits

240 Tuition Reimbursement	14.00	99.00
Total Personnel Services - Employee Benefits	\$14.00	\$99.00

300 Purchased Professional and Technical Services

360 Employee Training and Development Services	43.00	302.00
Total Purchased Professional and Technical Services	\$43.00	\$302.00
Total 2000 Support Services	\$57.00	\$401.00

LEA : 122092102 Central Bucks SD

Printed 12/1/2021 8:43:45 AM

2200 Support Services - Instructional Staff	<u>Nonspecial Education</u>	<u>Special Education</u>
200 Personnel Services - Employee Benefits		
240 Tuition Reimbursement	14.00	99.00
Total Personnel Services - Employee Benefits	\$14.00	\$99.00
300 Purchased Professional and Technical Services		
360 Employee Training and Development Services	43.00	302.00
Total Purchased Professional and Technical Services	\$43.00	\$302.00
Total 2200 Support Services - Instructional Staff	\$57.00	\$401.00

LEA : 122092102 Central Bucks SD

Printed 12/1/2021 8:43:45 AM

2270 Instructional Staff Professional Development Services	<u>Nonspecial Education</u>	<u>Special Education</u>
200 <u>Personnel Services - Employee Benefits</u>		
240 Tuition Reimbursement	14.00	99.00
Total Personnel Services - Employee Benefits	\$14.00	\$99.00
300 <u>Purchased Professional and Technical Services</u>		
360 Employee Training and Development Services	43.00	302.00
Total Purchased Professional and Technical Services	\$43.00	\$302.00
Total 2270 Instructional Staff Professional Development Services	\$57.00	\$401.00

LEA : 122092102 Central Bucks SD

Printed 12/1/2021 8:43:45 AM

5000 Other Expenditures and Financing Uses

900 Other Uses of Funds

939 Other Fund Transfers	989.00	6,985.00
Total Other Uses of Funds	\$989.00	\$6,985.00
Total 5000 Other Expenditures and Financing Uses	\$989.00	\$6,985.00

LEA : 122092102 Central Bucks SD

Printed 12/1/2021 8:43:45 AM

5200 Interfund Transfers - Out	<u>Nonspecial Education</u>	<u>Special Education</u>
900 <u>Other Uses of Funds</u>		
939 Other Fund Transfers	989.00	6,985.00
Total Other Uses of Funds	\$989.00	\$6,985.00
Total 5200 Interfund Transfers - Out	\$989.00	\$6,985.00

LEA : 122092102 Central Bucks SD

Printed 12/1/2021 8:43:45 AM

5210 General Fund Transfers	<u>Nonspecial Education</u>	<u>Special Education</u>
900 Other Uses of Funds		
939 Other Fund Transfers	989.00	6,985.00
Total Other Uses of Funds	\$989.00	\$6,985.00
Total 5210 General Fund Transfers	\$989.00	\$6,985.00

	<u>Nonspecial Education</u>	<u>Special Education</u>
6000 Revenue from Local Sources		
Total Revenue from Local Sources	\$1,511	\$10,673
7000 Revenue from State Sources		
Total Revenue from State Sources	\$1,511	\$10,673
Total	\$3,022	\$21,346
TOTAL REVENUES	\$3,022	\$21,346

LEA : 122092102 Central Bucks SD

Printed 12/1/2021 8:43:54 AM

	<u>Nonspecial Education</u>	<u>Special Education</u>
6000 Revenue from Local Sources		
6810 Revenue from Local Governmental Units	263	1,856
6821 State Revenue Received from Other Pennsylvania Public LEAs	1,248	8,817
Total Revenue from Local Sources	\$1,511	\$10,673
7000 Revenue from State Sources		
7810 State Share of Social Security and Medicare Taxes	263	1,856
7820 State Share of Retirement Contributions	1,248	8,817
Total Revenue from State Sources	\$1,511	\$10,673
TOTAL	\$3,022	\$21,346
TOTAL REVENUES	\$3,022	\$21,346